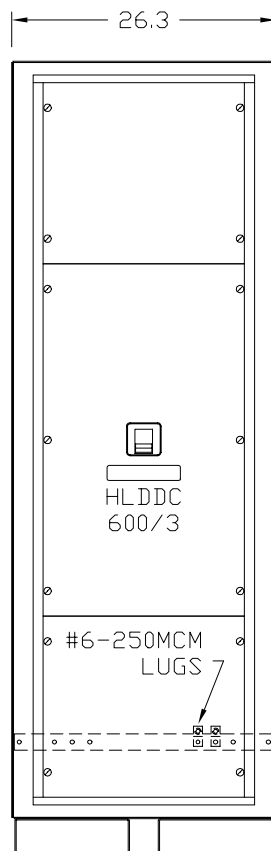
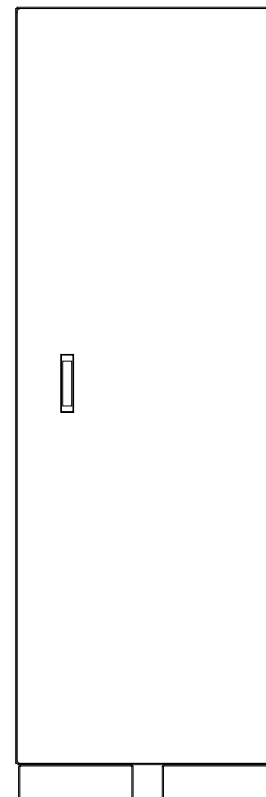


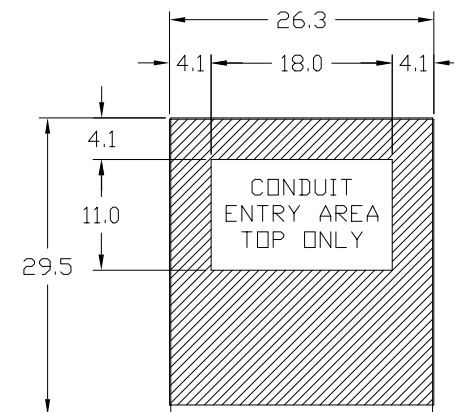
LEFT SIDE VIEW
SIDE COVER REMOVED



FRONT VIEW
DOOR REMOVED



FRONT VIEW
DOOR SHOWN



PLAN VIEW
CONDUIT ENTRY DETAIL

This Document Contains Proprietary and Confidential Information.
Duplication, reproduction or use of this document or its contents in any form
other than as expressly permitted by Kinney Electrical Mfg. Co., is prohibited.

MITSUBISHI ELECTRIC
VERNON HILLS, ILLINOIS

REVISIONS

PART NO.: LB-97225-4

DESCRIPTION: 9700 / 9800 DC LANDING CABINET - 600 AMP MAX

MEAU APPROVED: *gma*

KINNEY APPROVED: *RFM*

REV.: *

DATE: 1-18-2001

CAD FILE:

DRAWING NO.:

SHEET:

DRAWN BY: RFM

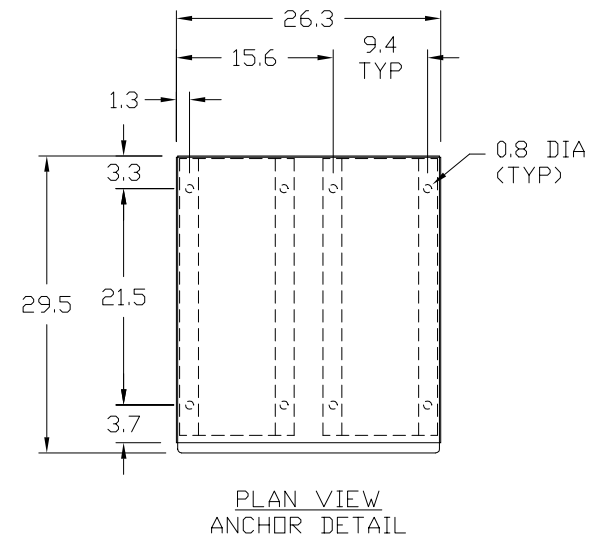
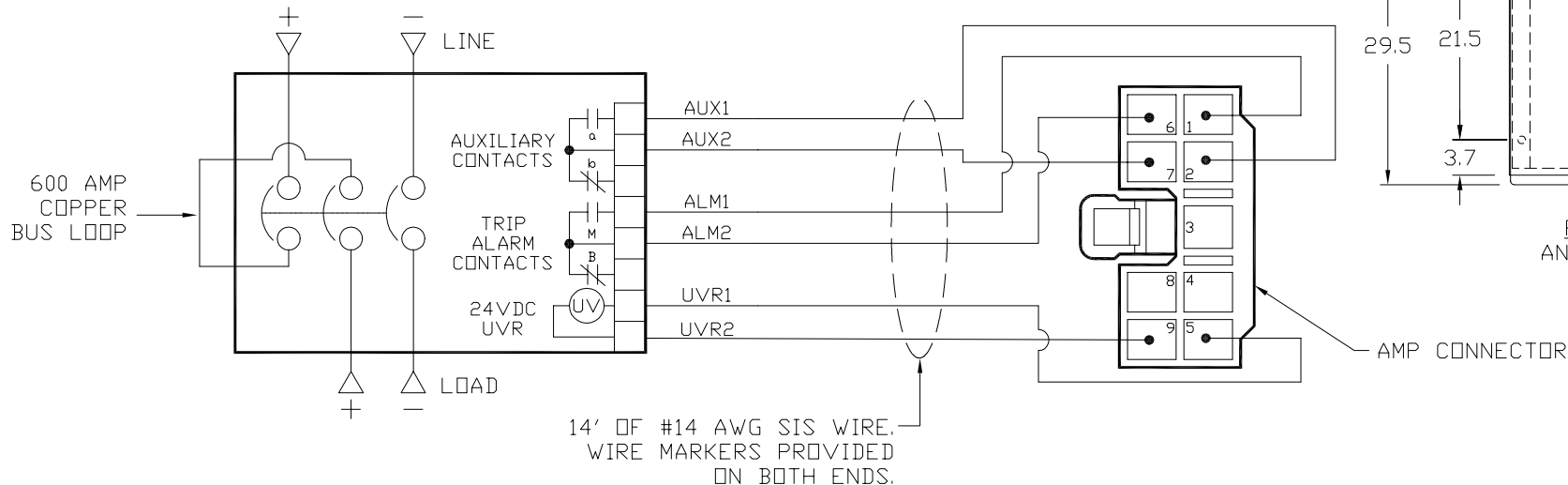
DCF97000600A01

M0000147

1 OF 2

DC LANDING CABINET – 600 AMPERES

PART NUMBER	UPS SERIES	KVA	BREAKER TRIP UNIT	BREAKER CATALOG NO.	LINE LUGS	LOAD LUGS
LB-97225-4	9700/9800	225	600 AMPS	HLDDC3600-C05-T06	<8> #6-350MCM	<2> #4-600MCM



ENCLOSURE NOTES:

SERVICE: 500VDC.

ENCLOSURE: NEMA 1 (UL 50 LISTED ENCLOSURE).

FRAME: BOLT TOGETHER TRI-SQUARE FORMED CHANNEL OF 10 GAUGE STEEL.

DOOR: 12 GAUGE PAINTED STEEL EQUIPPED WITH MITSUBISHI HANDLE WITH THREE POINT CATCH.

FINISH: MITSUBISHI BEIGE POLYESTER POWDERCOAT APPLIED TO SURFACES TREATED WITH AN IRON PHOSPHATE AND CHROME FREE SEALER.

BUS BAR: ELECTROLYTIC COPPER OF 98% CONDUCTIVITY, BASED ON 1000 AMPS PER SQUARE INCH DENSITY, SILVER PLATED.

WIRE BENDING GUTTER: MEETS OR EXCEEDS NEC TABLES 373-6(a), 373-6(b).

BREAKER: WESTINGHOUSE HLDDC 600 AMP FRAME, 3 POLE. BREAKER EQUIPPED WITH 600 AMP THERMAL-MAGNETIC TRIP UNIT, TWO AUXILIARY CONTACTS, TWO ALARM CONTACTS, AND 24VDC UNDER VOLTAGE RELEASE.

BREAKER RATING: 35,000 A. I. C. AT 500VDC.

LABELING: CABINET PROVIDED WITH UL 891 LABEL.

AMP CONNECTOR: AMP MIC MALE PLUG #172496-4

FIELD WIRING TERMINATION LABEL ATTACHED TO BREAKER MOUNTING PAN

DC LANDING BOX WIRES	UPS SERIES		AMP CONNECT. PIN #s
	9700 100-225KVA	9800 100-500KVA	
UVR1	5	3	5
UVR2	6	4	9
AUX1	3	1	2
AUX2	4	2	7
ALM1	1	-	1
ALM2	2	-	6

This Document Contains Proprietary and Confidential Information. Duplication, reproduction or use of this document or its contents in any form other than as expressly permitted by Kinney Electrical Mfg. Co., is prohibited.

MITSUBISHI ELECTRIC
VERNON HILLS, ILLINOIS

REVISIONS

PART NO.: LB-97225-4

DESCRIPTION: 9700 / 9800 DC LANDING CABINET – 600 AMP MAX

MEAU APPROVED: *Jma*

KINNEY APPROVED: *RFM*

REV.: *

DATE: 1-18-2001

CAD FILE:

DRAWING NO.:

SHEET:

DRAWN BY: RFM

DCF97000600A01

M0000147

2 OF 2