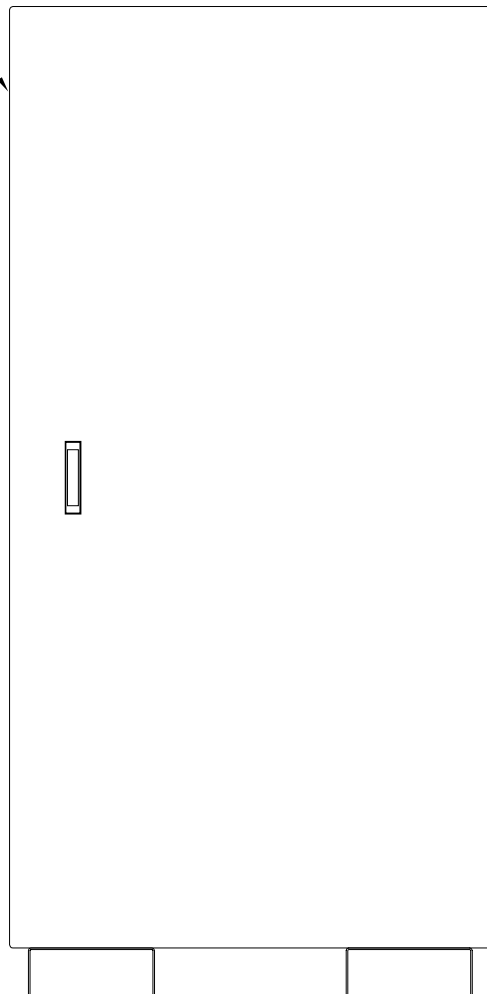
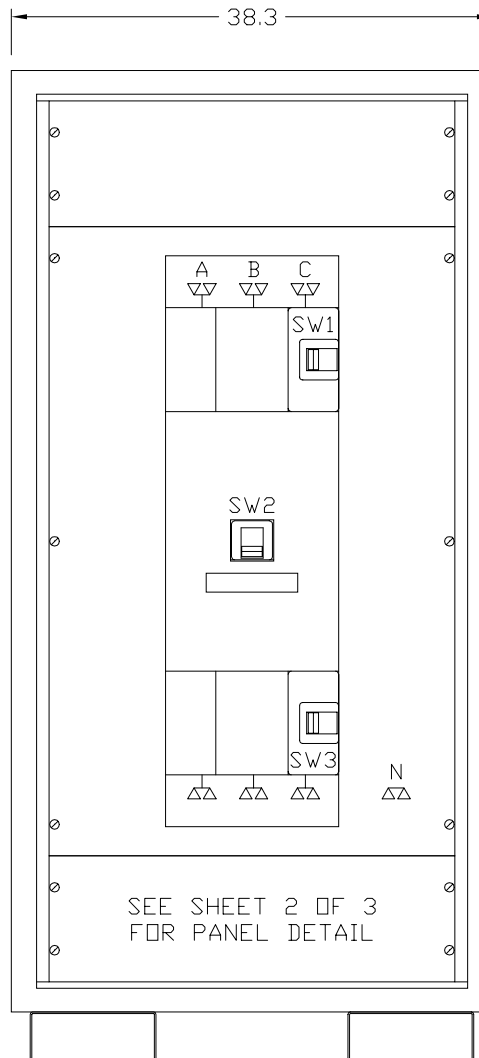


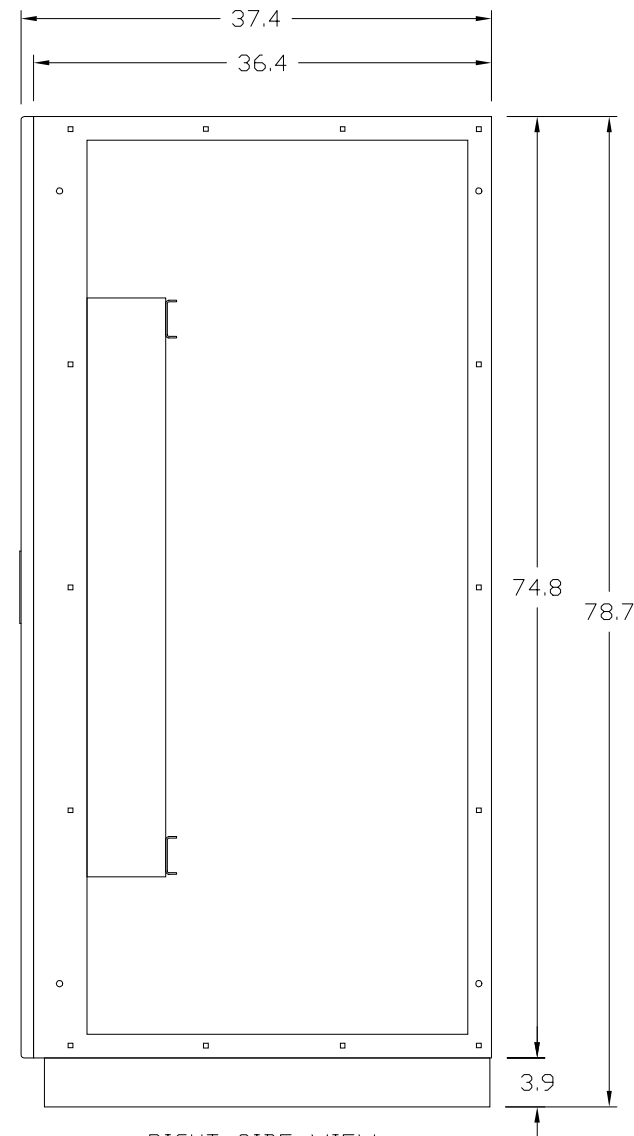
REMOVABLE LEFT
SIDE COVER



FRONT VIEW
DOOR SHOWN



FRONT VIEW
DOOR REMOVED



RIGHT SIDE VIEW
SIDE COVER REMOVED

This Document Contains Proprietary and Confidential Information.
Duplication, reproduction or use of this document or its contents in any form
other than as expressly permitted by Kinney Electrical Mfg. Co., is prohibited.

MITSUBISHI ELECTRIC
VERNON HILLS, ILLINOIS

REVISIONS

PART NO.: SEE TABLE

DESCRIPTION: 3 BREAKER FREE STANDING MBP PANEL - 600 AMP MAX.

MEAU APPROVED: *gma*

KINNEY APPROVED: *RFM*

REV.: *

DATE: 11-1-2000

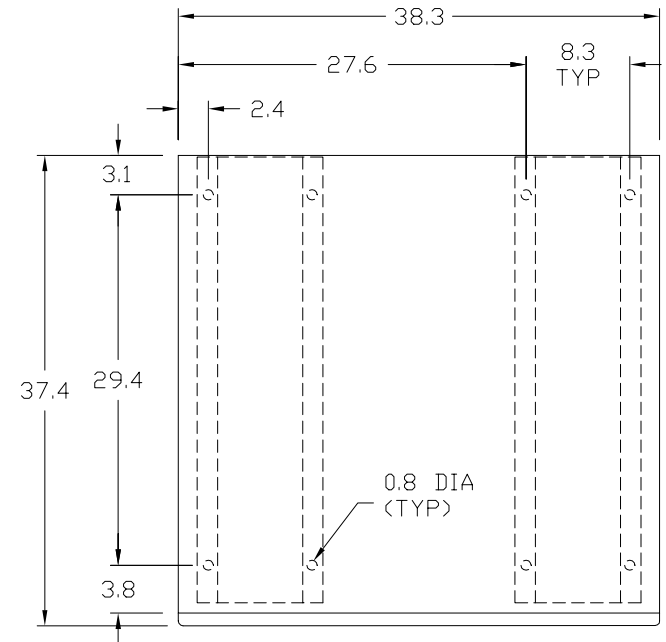
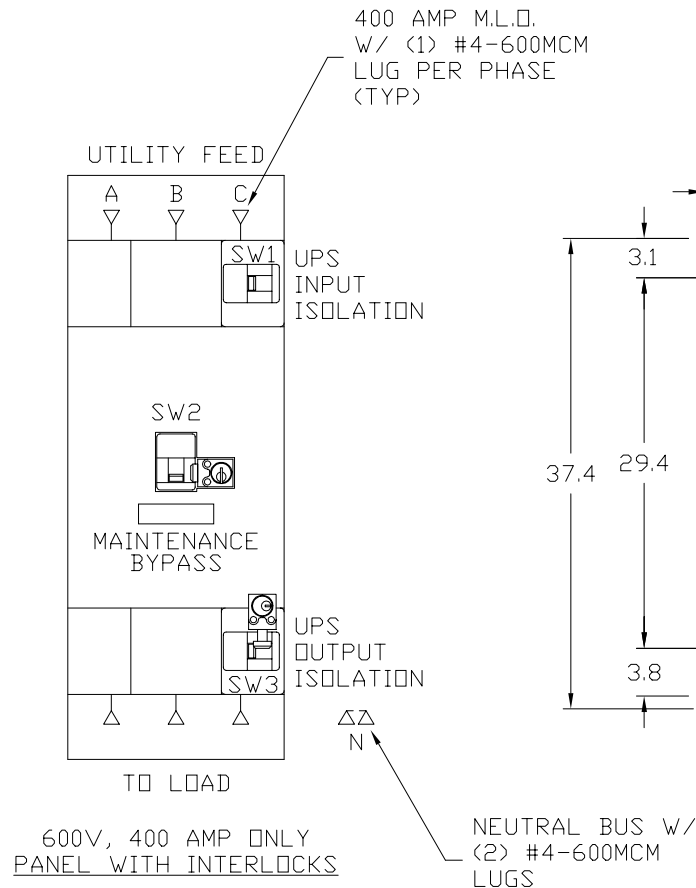
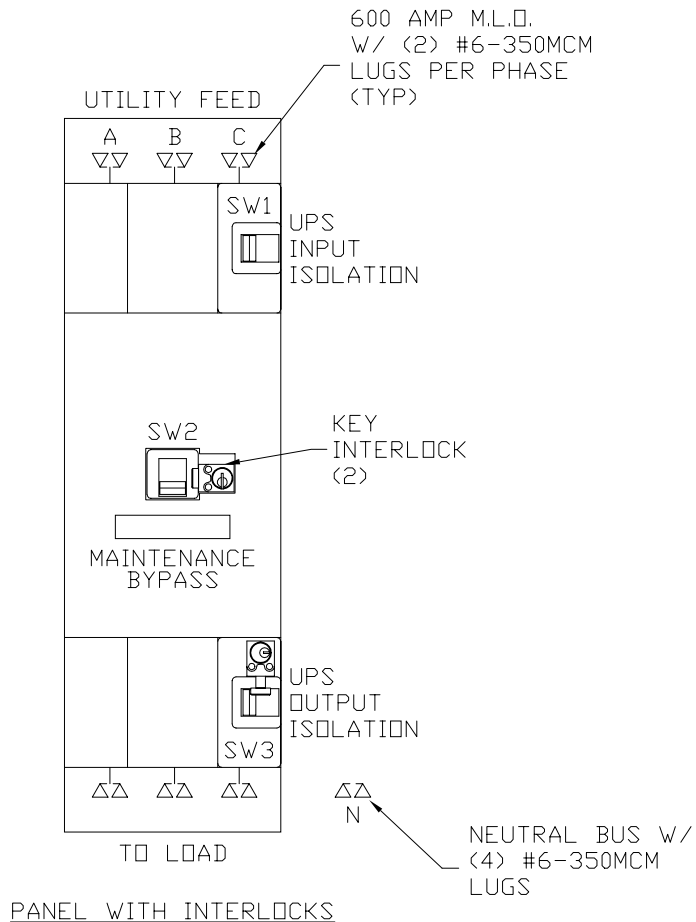
CAD FILE:

DRAWING NO.: SHEET:

DRAWN BY: RFM

MBF97000600A04 M0000136

1 OF 3



This Document Contains Proprietary and Confidential Information.
Duplication, reproduction or use of this document or its contents in any form other than as expressly permitted by Kinney Electrical Mfg. Co., is prohibited.

MITSUBISHI ELECTRIC
VERNON HILLS, ILLINOIS

REVISIONS

PART NO.: SEE TABLE

DESCRIPTION: 3 BREAKER FREE STANDING MBP PANEL - 600 AMP MAX.

MEAU APPROVED: *gma*

KINNEY APPROVED: *RFM*

REV.: *

DATE: 11-1-2000

CAD FILE:

DRAWING NO.:

SHEET:

DRAWN BY: RFM

MBF97000600A04

M0000136

2 OF 3

3 BREAKER MAINTENANCE BYPASS PANEL (MBP) 300-600 AMPERES						
PART NUMBER	UPS SERIES	KVA	BREAKER TYPE	AMPERES	SERVICE	A. I. C. RATING
FB973-CDP-500-480N	9700/9800	300	LD	500	480/277V	35,000
FB973-CDP-600-480N	9700/9800	375	LD	600	480/277V	35,000
FB973-CDP-400-600N	9700/9800	300	KD	400	600V	25,000
FB973-CDP-500-600N	9700/9800	375	LD	500	600V	25,000
FB973-CDP-600-600N	9700/9800	500	LD	600	600V	25,000
A. I. C. RATING	480/277V	RATING CODE	600V	RATING CODE		
35,000	LD	--	HKD / HLD	H		
50,000	--	--	KDC / LDC	U		
65,000	HLD	H	--	--		
100,000	LDC	U	--	--		
200,000	--	--	--	--		
ENCLOSURE NOTES: ENCLOSURE: NEMA 1 (UL 50 LISTED ENCLOSURE). BOX: 12 GAUGE PAINTED STEEL, CONTINUOUSLY WELDED SEAMS AND CORNERS, NO KNOCKOUTS. DOOR: 12 GAUGE PAINTED STEEL EQUIPPED WITH MITSUBISHI HANDLE WITH THREE POINT CATCH. FINISH: MITSUBISHI BEIGE POLYESTER POWDERCOAT APPLIED TO SURFACES TREATED WITH AN IRON PHOSPHATE AND CHROME FREE SEALER.						
MAINTENANCE BYPASS PANEL NOTES: KINNEY PANEL TYPE: CDP (UL 67 LISTED INTERIOR) SERVICE: SEE TABLE ABOVE. BUS : ELECTROLYTIC COPPER OF 98% CONDUCTIVITY, BASED ON 1000 AMPS PER SQUARE INCH DENSITY. WIRE BENDING GUTTER: MEETS OR EXCEEDS NEC TABLES 373-6(a), 373-6(b). BREAKERS: WESTINGHOUSE THERMAL-MAGNETIC, 600 AMP FRAME, 3 POLE, TRIP AS INDICATED: SEE TABLE ABOVE FOR BREAKER TYPE, AMPERES, AND A.I.C. RATING. BREAKER TERMINAL LUG: LD - (2) 3/0-350MCM PER PHASE, KD - (1) 250-500MCM PER PHASE. KEY INTERLOCK: KIRK TYPE F, BREAKERS ARE INTERLOCKED SO AT LEAST ONE BREAKER IS ON AT ANY GIVEN TIME.						
This Document Contains Proprietary and Confidential Information. Duplication, reproduction or use of this document or its contents in any form other than as expressly permitted by Kinney Electrical Mfg. Co., is prohibited.				MITSUBISHI ELECTRIC VERNON HILLS, ILLINOIS		
REVISIONS				PART NO.: SEE TABLE		
				DESCRIPTION: 3 BREAKER FREE STANDING MBP PANEL - 600 AMP MAX.		
				MEAU APPROVED: <i>Jma</i>	KINNEY APPROVED: <i>RFM</i>	REV.: *
				DATE: 11-1-2000	CAD FILE:	DRAWING NO.: SHEET:
				DRAWN BY: RFM	MBF97000600A04	M0000136 3 OF 3

PART NUMBER:

FB973-X X X-600-480 N

A.I.C. RATING OPTION

ACCESSORY OPTION 1

ACCESSORY OPTION 2

INTERLOCK OPTION

A.I.C. RATING CODES:

H - HIGH INTERRUPTING
U - ULTRA HIGH INTERRUPTING

INTERLOCK OPTION:

K - KEY INTERLOCK
N - NONE

ACCESSORY CODES:

1 - 1a/1b AUXILIARY SWITCH
2 - 2a/2b AUXILIARY SWITCH
3 - 24VDC UNDER VOLTAGE RELEASE
4 - 1m/1b ALARM/LOCKOUT SWITCH
5 - 1a/1b AUXILIARY & 1m/1b ALARM SWITCH

NOTES:

1. ACCESSORIES NORMALLY INSTALLED ON SW2.
2. PUT LOWEST CODE IN OPTION 1, i.e. 12, 24.