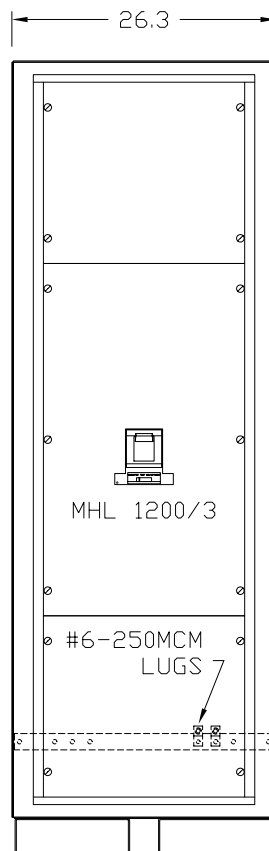
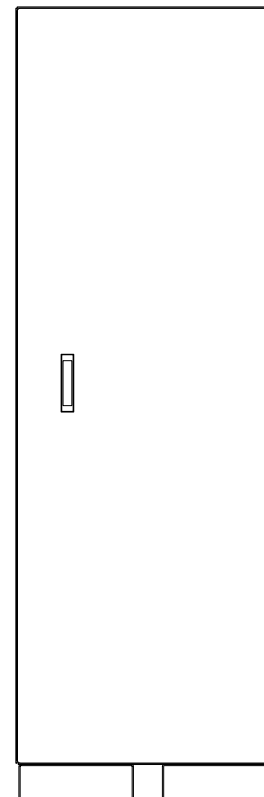


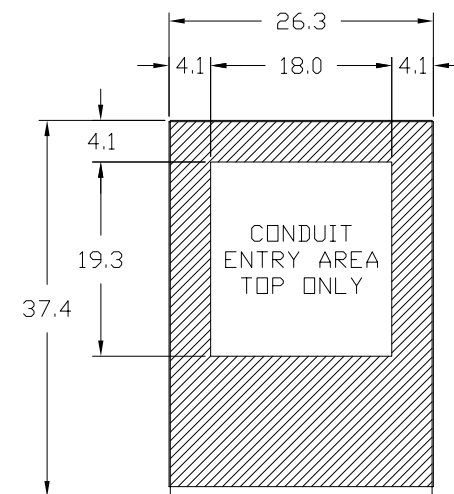
LEFT SIDE VIEW
SIDE COVER REMOVED



FRONT VIEW
DOOR REMOVED



FRONT VIEW
DOOR SHOWN



PLAN VIEW
CONDUIT ENTRY DETAIL

This Document Contains Proprietary and Confidential Information.
Duplication, reproduction or use of this document or its contents in any form
other than as expressly permitted by Kinney Electrical Mfg. Co., is prohibited.

MITSUBISHI ELECTRIC
VERNON HILLS, ILLINOIS

REVISIONS

PART NO.: SEE TABLE

DESCRIPTION: 9800 DC LANDING CABINET - 1200 AMP MAX

MEAU APPROVED: *gma*

KINNEY APPROVED: *RFM*

REV.: *

DATE: 1-18-2001

CAD FILE:

DRAWING NO.:

SHEET:

DRAWN BY: RFM

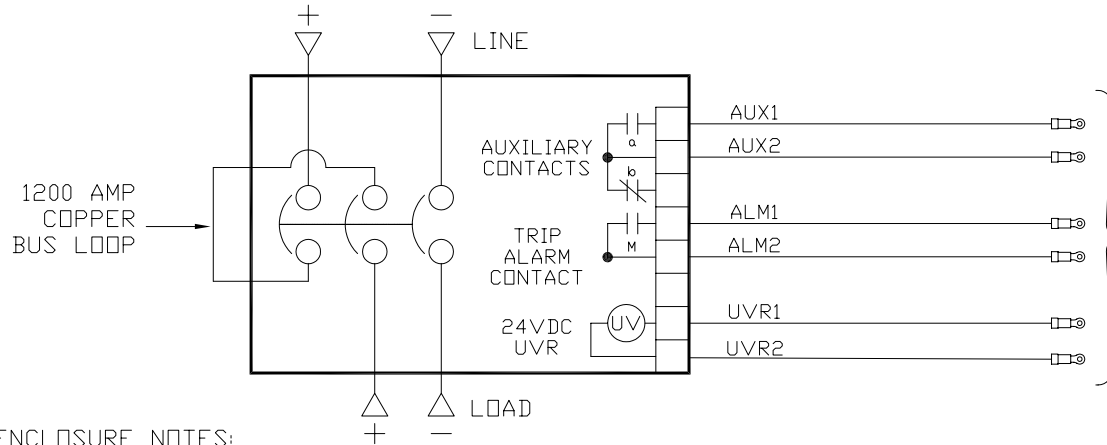
DCF97001200A01

M0000149

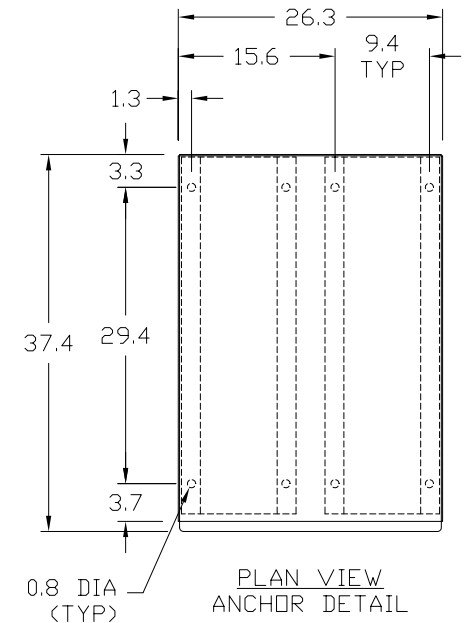
1 OF 2

DC LANDING CABINET - 1200 AMPERES

PART NUMBER	UPS SERIES	KVA	BREAKER TRIP UNIT	BREAKER CATALOG NO.	LINE LUGS	LOAD LUGS
LB-97300-4	9800A	300	1000 AMPS	MHL361000-40DC-2321	< 8 > #4-600MCM	< 4 > #4-600MCM
LB-97375-4[5]	9800A	375	1200 AMPS	MHL361200-40DC-2321	< 8 [10] > #4-600MCM	< 4 > #4-600MCM
LB-98300-4	9800D	300	700 AMPS	MHL36700-36DC-2321	< 8 [10] > #4-600MCM	< 4 > #4-600MCM
LB-98375-4	9800D	375	900 AMPS	MHL36900-40DC-2321	< 8 [10] > #4-600MCM	< 4 > #4-600MCM
LB-98500-4	9800D	500	1200 AMPS	MHL361200-40DC-2321	< 8 [10] > #4-600MCM	< 4 > #4-600MCM



14'-#14 AWG. SIS VW-1.
#4 SCREW RING TERMINALS
AND WIRE MARKERS PROVIDED
ON BOTH ENDS.



ENCLOSURE NOTES:

SERVICE: LB-97: 360VDC, LB-98: 480VDC.

ENCLOSURE: NEMA 1 (UL 50 LISTED ENCLOSURE).

FRAME: BOLT TOGETHER TRI-SQUARE FORMED CHANNEL OF 10 GAUGE STEEL.

DOOR: 12 GAUGE PAINTED STEEL EQUIPPED WITH MITSUBISHI HANDLE WITH THREE POINT CATCH.

FINISH: MITSUBISHI BEIGE POLYESTER POWDERCOAT APPLIED TO SURFACES TREATED WITH AN IRON PHOSPHATE AND CHROME FREE SEALER.

BUS BAR: ELECTROLYTIC COPPER OF 98% CONDUCTIVITY, BASED ON 1000 AMPS PER SQUARE INCH DENSITY, SILVER PLATED.

WIRE BENDING GUTTER: MEETS OR EXCEEDS NEC TABLES 373-6(a), 373-6(b).

BREAKER: SQUARE D MHL 1200 AMP FRAME, 3 POLE. BREAKER EQUIPPED WITH THERMAL-MAGNETIC TRIP UNIT (SEE TABLE), TWO AUXILIARY CONTACTS, ONE ALARM CONTACT, AND 24VDC UNDER VOLTAGE RELEASE.

BREAKER RATING: 25,000 A. I. C. AT 500VDC (LOADED), 600VDC (FLOATING) FOR 1200A
20,000 A. I. C. AT 500VDC (LOADED), 600VDC (FLOATING) FOR 1000A OR LESS.

LABELING: CABINET PROVIDED WITH UL 891 LABEL.

FIELD WIRING TERMINATION LABEL
ATTACHED TO BREAKER MOUNTING
PAN

DC LANDING BOX WIRES	UPS SERIES		
	9700 100-225KVA	9800A 100-375KVA	9800D 100-750KVA
UVR1	5	3	21
UVR2	6	4	22
AUX1	3	1	23
AUX2	4	2	24
ALM1	1	-	-
ALM2	2	-	-

This Document Contains Proprietary and Confidential Information.
Duplication, reproduction or use of this document or its contents in any form
other than as expressly permitted by Kinney Electrical Mfg. Co., is prohibited.

MITSUBISHI ELECTRIC
VERNON HILLS, ILLINOIS

REVISIONS			PART NO.: SEE TABLE			
1	ADDED 9800A&D P/N'S & REV. BKR RATING & LABEL		DESCRIPTION: 9800 DC LANDING CABINET - 1200 AMP MAX			
	REMOVED AMP CNCTR & ADDED RING TERM. 7-18-03		MEAU APPROVED: <i>Jma</i>	KINNEY APPROVED: <i>RFM</i>	REV.: 1	
			DATE: 1-18-2001	CAD FILE:	DRAWING NO.:	SHEET:
			DRAWN BY: RFM	DCF97001200A01	M0000149	2 OF 2