



## INSTRUCTIONS

GEI-98345A  
SUPERSEDES GEI-98345

*Save - Only Copy*

*TEST SCHOOL COPY*

# GROUND DIRECTIONAL OVERCURRENT RELAY

## Types

JBCG51K

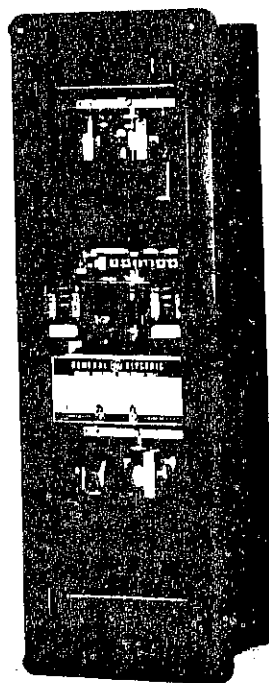
JBCG52K

JBCG53K

JBCG54K

JBCG77K

JBCG78K



POWER SYSTEMS MANAGEMENT DEPARTMENT

GENERAL  ELECTRIC

PHILADELPHIA, PA.

## CONTENTS

	page
INTRODUCTION.....	5
Application.....	5
Characteristics.....	9
Pickup.....	9
Reset.....	9
Operating Time.....	9
Ratings.....	5
Current Circuits.....	5
Potential Coils.....	9
Seal-in Unit.....	9
Contacts.....	9
Burdens.....	11
RECEIVING, HANDLING AND STORAGE.....	21
DESCRIPTION.....	5
Time Overcurrent Unit.....	10
Directional Unit.....	15
Instantaneous Overcurrent Unit.....	15
Seal-in Unit.....	20
Contacts.....	20
Low Gradient Contact.....	20
Barrel Contact.....	20
Case.....	5
INSTALLATION.....	22
Location.....	22
Mounting.....	23
Connections.....	23
Inspection.....	23
Operation.....	23
CALCULATION OF SETTING.....	10
Time Setting.....	10
Example Of Setting.....	10
ADJUSTMENTS.....	24
Instantaneous Overcurrent Unit.....	24
Time Overcurrent Unit.....	24
Directional Unit.....	24
Contact Adjustment.....	24
Bias Adjustment.....	24
RENEWAL PARTS.....	26

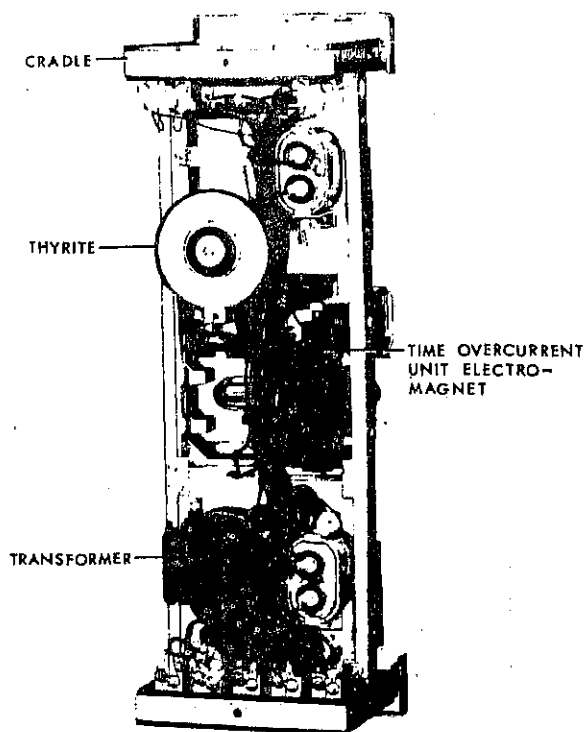
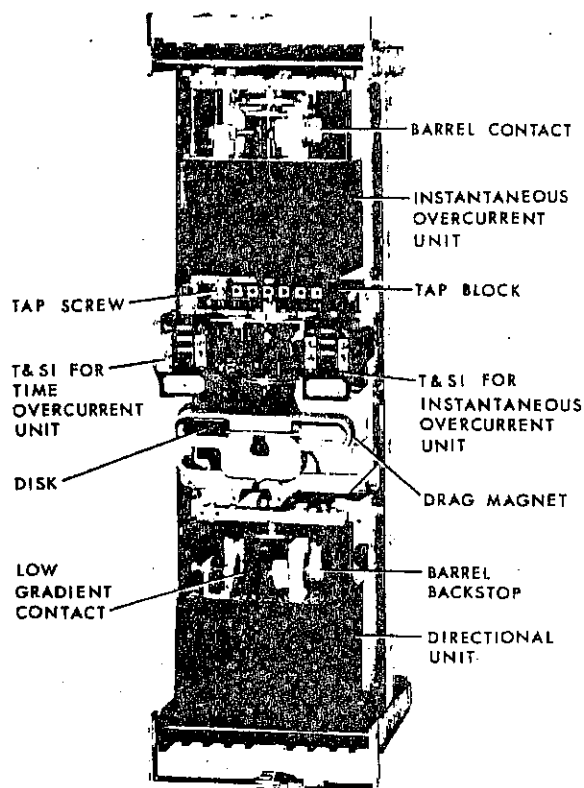


Fig. 1A (8035174) Type JBCG53K Relay. Front View, In Cradle.

Fig. 1B (8035175) Type JBCG53K Relay. Rear View, In Cradle.

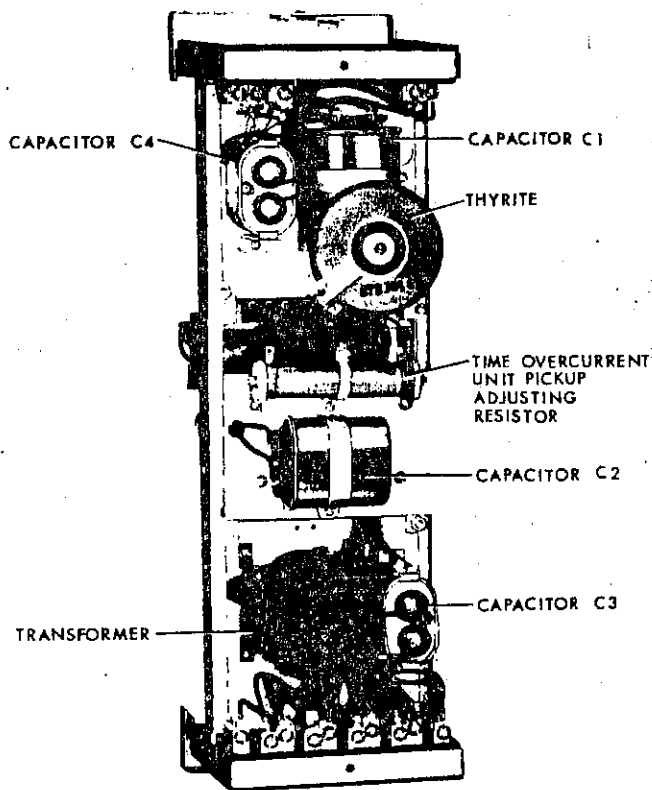


Fig. 1C (8035399) Type JBCG77K Relay. Rear View, In Cradle.

# GROUND DIRECTIONAL OVERCURRENT RELAYS

## TYPE JBCG

### DESCRIPTION

Type JBCG relays are ground directional overcurrent relays used primarily for the protection of feeders and transmission lines. They are available with inverse, very inverse, or extremely inverse time characteristics.

They consist of three units, an instantaneous overcurrent unit (top) of the induction-cup type, a time overcurrent unit (middle) of the induction-disk type, and an instantaneous power-directional unit (bottom) of the induction-cup type. The directional unit is either potential or current polarized and, by means of its closing contacts, directionally controls the operation of both the time overcurrent and instantaneous overcurrent units. All units are mounted in the L2, (large double ended) drawout case.

### APPLICATION

Type JBCG relays are used for ground fault protection of a single line. They have a low-range time-overcurrent unit which may be rated 0.5/2 or 1.5/6 amperes, although the 4/16 ampere rating is also available. The instantaneous overcurrent unit may be rated according to the pickup ranges listed in Table III. Within a given range, the relay pickup is continuously adjustable. Because the transient overreach of this unit is low, the instantaneous unit may be set 10% above the maximum line fault current for a fault at the remote bus.

Under normal conditions, no current flows in either the operating or current polarizing coils, nor is there any voltage across the potential polarizing coils.

Figure 2 shows the external connections for the single circuit type JBCG relays.

Figure 3 shows the external connections for the double circuit type JBCG relays.

On some applications, system conditions may at one time be such that potential polarization is desirable, and at other times be such that current polarization would be preferred. The type JBCG relay, with its dual polarization feature, is well suited for such applications. The curves in Figure 4 compare the performance of the relay when dual

polarized with its performance when either potential or current polarized alone. The simultaneous use of both sets of polarizing coils is advantageous on applications where current and potential polarizing sources are available and there is a possibility that one or the other source may be temporarily lost.

The differences between the various models covered by this instruction book are shown in Table I. Inverse time relays should be used on systems where the fault current flowing through a given relay is influenced largely by the system generating capacity at the time of the fault. Very inverse time and extremely inverse time relays should be used in cases where the fault current magnitude is dependent mainly upon the location of the fault in relation to the relay, and only slightly or not at all upon the system generating setup. The reason for this is that relays must be set to be selective with maximum fault current flowing. For fault currents below this value, the operating time becomes greater as the current is decreased. If there is a wide range in generating capacity, together with variation in short-circuit-current with fault position, the operating time with minimum fault current may be exceedingly long with very inverse time relays and even longer with extremely inverse time relay. For such cases, the inverse time relay is more applicable.

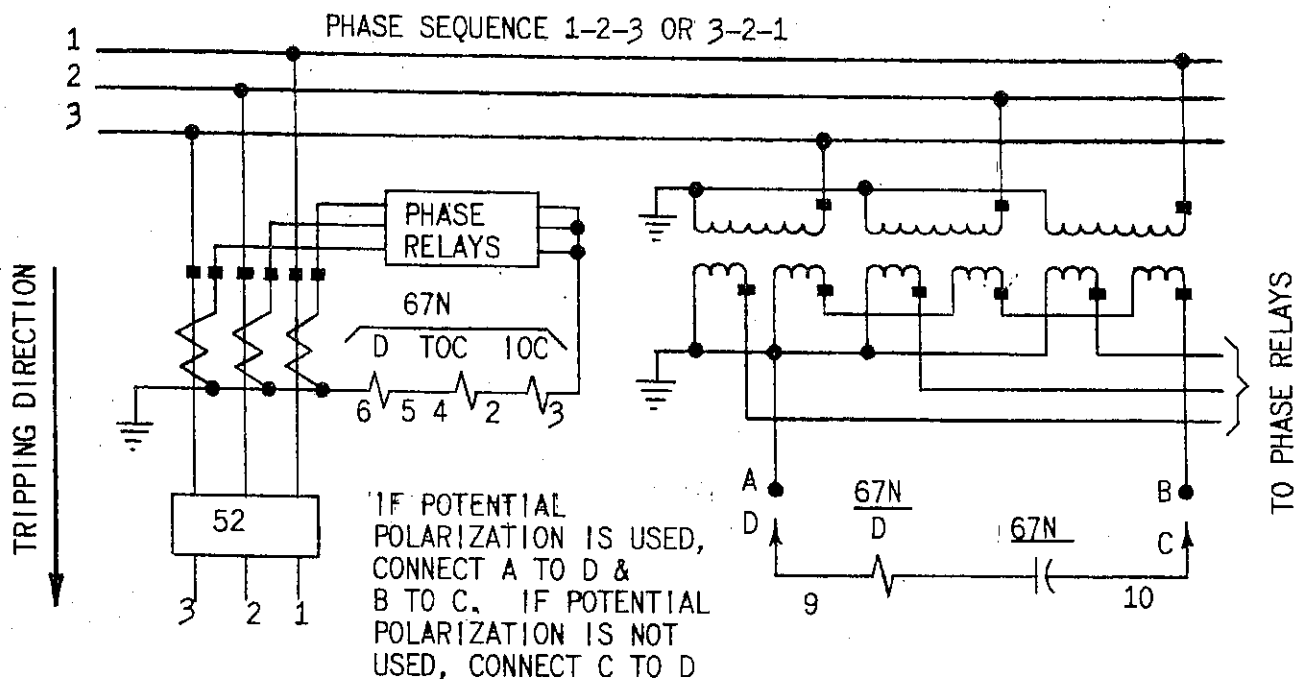
TABLE I

Relay Model	Time Characteristic	Circuit Closing Contacts	Internal Connections
JBCG51K	Inverse	One	Fig. 10
JBCG52K	Inverse	Two	Fig. 11
JBCG53K	Very Inverse	One	Fig. 10
JBCG54K	Very Inverse	Two	Fig. 11
JBCG77K	Extr. Inverse	One	Fig. 12
JBCG78K	Extr. Inverse	Two	Fig. 13

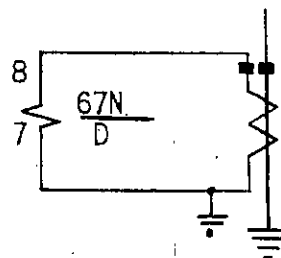
### CURRENT CIRCUITS

The continuous and short time ratings of the time overcurrent unit operating coil circuit are shown in Table II. These same ratings are applicable to the directional unit operating coil circuit except that its continuous rating is independent of changes in the time overcurrent unit tap setting. Hence, the

*These instructions do not purport to cover all details or variations in equipment nor to provide for every possible contingency to be met in connection with installation, operation or maintenance. Should further information be desired or should particular problems arise which are not covered sufficiently for the purchaser's purposes, the matter should be referred to the General Electric Company.*



IF CURRENT POLARIZATION  
IS NOT USED, DO NOT  
CONNECT TO STUD 7&8.



### LEGEND

67N - JBCG51E, 53E OR 77E  
IOC - INSTANTANEOUS OVERCURRENT UNIT  
TOC - TIME OVERCURRENT UNIT  
D - DIRECTIONAL UNIT  
T&SI - TARGET & SEAL-IN-UNIT.

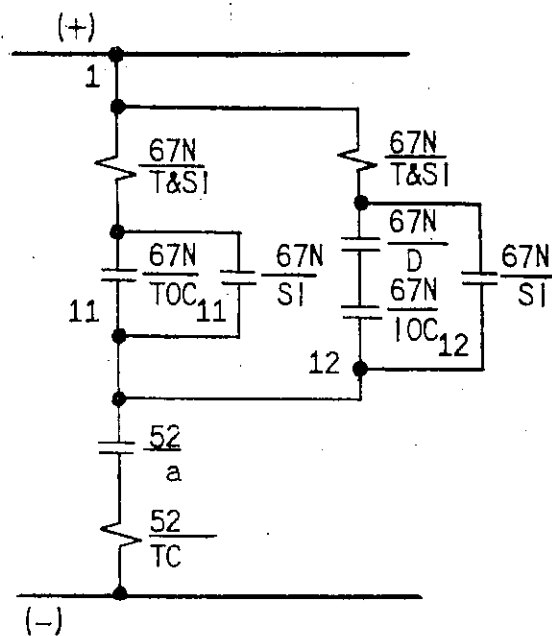


Fig. 2 (0148A4012-0) External Connection Diagram For Relay Type JBCG51E, 53E or 77E

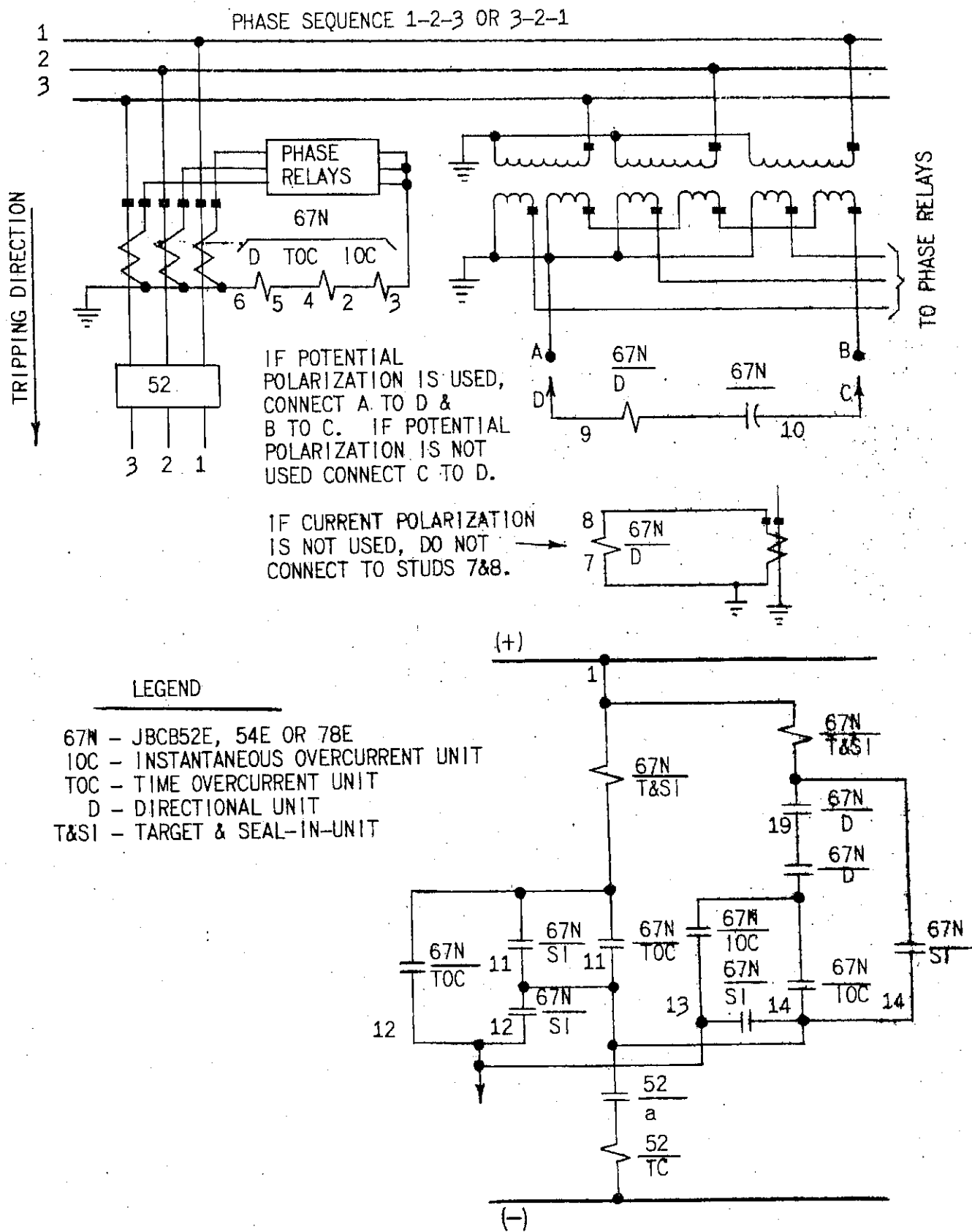


Fig. 3 (0148A4013-0) External Connection Diagram For Relay Type JBCG52E, 54E or 78E.

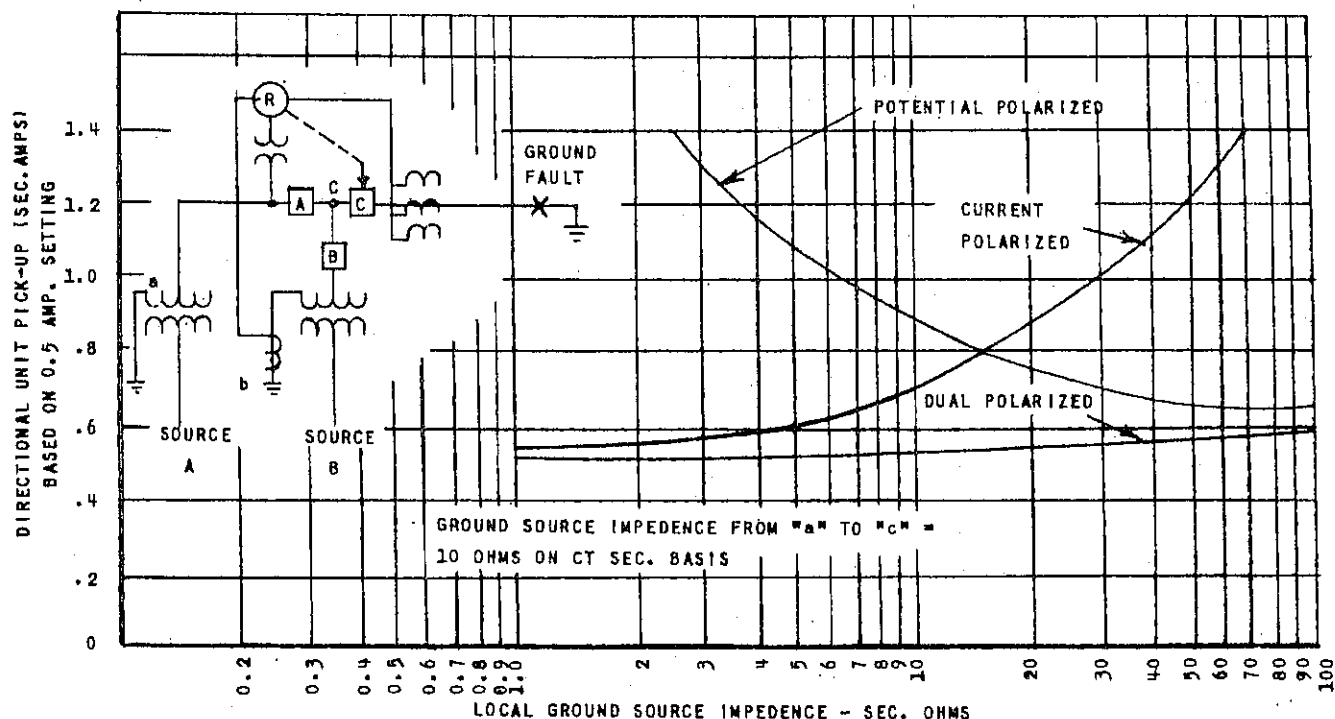


Fig. 4 (362A684-1) A Typical Comparison Of Current, Potential Or Dual Polarization Showing Effect Of Local Ground Impedance On Directional Unit Of Type JBCG Relay.

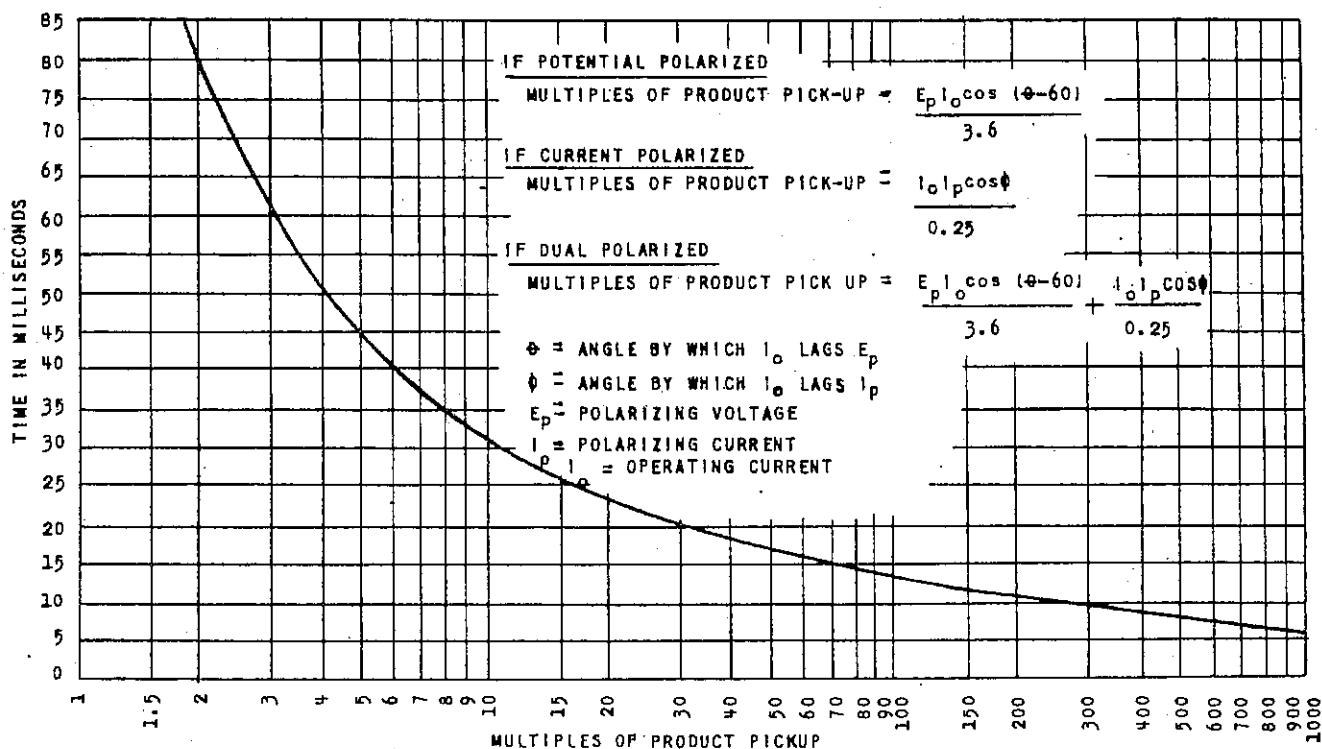


Fig. 5 (376A934-0) Time Characteristic Of Dual Polarized Directional Unit In Type JBCG Relay.

information associated with the asterisk under Table II does not apply to the directional unit operating coil. The directional unit current polarizing coils have a continuous rating of 5 amperes and a one (1) second rating of 150 amperes. Table III shows the ratings of the available ranges of the instantaneous overcurrent unit. Since all operating current circuits are normally connected in series, the operating coil ratings of all three units should be considered in determining the rating of the entire operating circuit.

TABLE II

RATINGS OF TIME OVERCURRENT UNIT  
OPERATING COILS

Tap Range (Amps)	Tap Ratings (Amps)	*Cont. Rating (Amps)	One Sec. Rating (Amps)
0.5/2	0.5, 0.6, 0.8, 1.0 1.2, 1.5, 2.0	1.5	100**
1.5/6	1.5, 2, 2.5, 3, 4, 5, 6,	5	200
4/16	4, 5, 6, 7, 8, 10, 12, 16	10	220

\*Applies to all taps up to and including this value. The continuous rating of higher current taps is the same as the tap value.

\*\*Applies to the very inverse and extremely inverse time relays only. The one second rating of inverse time relays is 65 amperes.

TABLE III

RATINGS OF INSTANTANEOUS OVERCURRENT  
UNIT OPERATING COILS

Pickup Range (Amps)	Continuous Rating (Amps)	One Second Rating (Amps)
2-8	5	150
4-16	5	150
10-40	5	220
20-80	5	220
40-160	5	220

## POTENTIAL COILS

The potential polarizing coils will withstand 120 volts continuously and 360 volts for 60 seconds.

## SEAL-IN UNIT

The rating and impedance of the seal-in unit for the 0.2 and 2 ampere taps are given in Table IV. The tap setting used will depend on the current drawn by the trip coil.

The 0.2 ampere tap is for use with trip coils which operate on currents ranging from 0.2 up to 2.0 ampere at the minimum control voltage. If this tap is used with trip coils requiring more than 2 amperes, there is a possibility that the resistance of 7 ohms will reduce the current to so low a value that the breaker will not be tripped.

The 2 ampere tap should be used with trip coils that take two amperes or more at minimum control voltage, provided the current does not exceed 30 amperes at the maximum control voltage. If the tripping current exceeds 30 amperes, the connections should be arranged so that the induction unit contacts will operate an auxiliary relay which in turn energized the trip coil or coils. On such an application, it may be necessary to connect a loading resistor in parallel with the auxiliary relay coil to allow enough current to operate the target seal-in unit.

TABLE IV

## SEAL-IN UNIT RATINGS

	2 AMP TAP	0.2 AMP TAP
Carry-Tripping Duty	30 Amps	3 Amps
Carry Continuously	3 Amps	0.3 Amps
D-C Resistance	0.13 Ohms	1 Ohm
Impedance (60 cycles)	0.53 Ohms	52 Ohms

## CHARACTERISTICS

## PICKUP

When potential polarized, the directional unit will pickup at 3.6 volt-amperes at the maximum torque angle of 60 degrees lag (current lags voltage). When current polarized, it will pickup at approximately 0.5 ampere with the operating and polarizing coils connected in series. The performance of the unit with simultaneous current and potential polarization is typified in Figure 4.

The current required to close the time overcurrent unit contacts, will be within five percent of the tap screw setting. The pickup of the instantaneous overcurrent unit can be adjusted over a four-to-one range as indicated in Table III.

## RESET (TIME OVERCURRENT UNIT)

The minimum percentage of minimum closing current at which the time overcurrent unit will reset is 90% for inverse-time relays and 65% for very inverse and extremely inverse time relays. When the relay is de-energized, the time required for the disk to completely reset to the number 10 time dial position is approximately 6 seconds for inverse time relays and 60 seconds for very inverse and extremely inverse time relays.

## OPERATING TIME

The time curve for the directional unit is shown in Figure 5.

The time curves of the time overcurrent unit are shown in Figures 6, 7, and 8 respectively for inverse, very inverse and extremely inverse time relays. For the same operating conditions, the relay will operate repeatedly within one or two percent of the same time.

The time curve for the instantaneous overcurrent unit is shown in Figure 9.



**BURDEN**

The capacitive burden of the potential polarizing circuit of the directional unit at 60 cycles and 120 volts is 10 volt-amperes at 0.86 power factor. Table V gives the current circuit burdens of the directional unit.

Table VI gives the total burden of the time overcurrent unit plus the instantaneous overcurrent unit.

Ordinarily, the potential circuit is in the open corner of broken delta potential transformers and the current circuits are in the residual circuits of current transformers. The burden is, therefore, only imposed for the duration of the ground fault and need be considered only for this brief period.

**TABLE V****DIRECTIONAL UNIT CURRENT CIRCUIT  
BURDENS AT 60 CYCLES AND 5 AMPERES**

CIRCUIT	Z (OHMS)	VA	P.F.	WATTS
Operating	0.46	12.0	0.52	6.24
Polarizing	0.24	6.0	0.95	5.7

**CALCULATION OF SETTING****TIME SETTING**

The operating time of the time overcurrent unit for any given value of current and tap setting is determined by the time dial setting. This operating time is inversely proportional to the current magnitude as illustrated by the time curves in Figs. 6, 7 and 8: Note that the current values on these curves are given as multiples of the tap setting. That is, for a given time dial setting, the time will be the same for 80 amperes on the 8 ampere tap as for 50 amperes on the 5 ampere tap, since in both cases, the current is 10 times tap setting.

If selective action of two or more relays is required, determine the maximum possible short-circuit current of the line and then choose a time value for each relay that differs sufficiently to insure the proper sequence in the operation of the several circuit breakers. Allowance must be made for the time involved in opening each breaker after the relay contacts close. For this reason, unless the circuit time of operation is known with accuracy, there should be a difference of about 0.5 second (at the maximum current) between relays whose operation is to be selective.

**EXAMPLE OF SETTING**

Assume that the relay is being used in a circuit where the circuit breaker should trip on a minimum fault of 450 amperes, and that the breaker should trip in one second on a short circuit of 2,250 amperes. Assume further that current transformers of 60/1 ratio are used.

The current tap setting is found by dividing minimum primary tripping current by the current

transformer ratio, and then allowing a 50% margin of safety. In this case, 450 amperes divided by 60 equals 7.5 amperes, and 7.5 divided by 1.50 equals 5 amperes. Thus, the 5 ampere tap is used. To find the proper time dial setting to give one second time delay at 2,250 amperes, divide 2,250 by the transformer ratio. This gives 37.5 amperes secondary current which is 7.5 times the 5 ampere tap setting. By referring to the time-current curves Figs. 6, 7 and 8, it will be seen that 7.5 times the minimum operating current gives a one second delay for a no. 3.6 time dial setting on an inverse time relay, a no. 5.5 time dial setting on a very inverse time relay, and a no. 10 time dial setting on an extremely inverse time relay. The above results should be checked by means of an accurate timing device. Slight readjustment of the dial can be made until the desired time is obtained.

Because of its low transient overreach the instantaneous overcurrent unit may be set 10% above the maximum line fault current for a fault at the remote bus is 2,250 amperes. The instantaneous current setting is found by dividing 2,250 amperes by the current transformer ratio which is 60/1 and then allowing a 10% margin. In this case, 2,250 amperes divided by 60/1 equals 37.5 amperes multiplied by 1.10 equals 41.25 amperes. Thus, rounding off to a half ampere, 41.5 setting should be used.

The time and instantaneous overcurrent units are controlled by the directional unit. In general, the current setting of the time unit is always below the instantaneous current setting. It is desirable to determine that, at the pickup of the time overcurrent unit, the directional unit will operate. This can be readily done by calculating from system fault data, the zero sequence currents at the relay for a fault restricted to the pickup value of the time overcurrent unit. With potential polarization only, 3.6 va at the maximum torque angle of 60 degrees lag (current times voltage) is required. With current polarization only, 0.25 (10 x  $I_{polar}$  in phase) is required.

**CONSTRUCTION  
TIME OVERCURRENT UNIT**

The inverse and very inverse time overcurrent units consist of a tapped current operating coil wound on a U-magnet iron structure. The tapped operating coil is connected to taps on the tap block. The U-magnet contains wound shading coils which are connected in series with a directional unit contact. When power flow is in such a direction as to close the directional unit contacts, the shading coils act to produce a split-phase field which, in turn develops torque on the operating disk.

The extremely inverse time overcurrent unit is of the wattmetric type similar to that used in watt-hour meters except as follows: the upper portion of the iron structure has two concentric windings on the middle leg of the magnetic circuit. One of these is a tapped current winding connected to taps on the tap block; the other is a floating winding which is connected in series with the directional unit contacts, a resistor, a capacitor and the two coils on the lower legs of the magnetic

TABLE VI  
BURDENS OF OVERCURRENT UNITS (TIME AND INSTANTANEOUS)  
AT 60 CYCLES

Time Characteristic	RANGE		BURDENS AT MINIMUM PICKUP OF TIME UNIT					OHMS IMPEDANCE AT		† VA At 5 Amps
	Time Unit	Inst. Unit	Eff. Res. (Ohms)	React. (Ohms)	*Imped. (Ohms)	+Volt-Amps	Power Factor	3 Times Min. P.U.	10 Times Min. P.U.	
Inverse	0.5/2	All Ranges	7.90	19.7	21.1	5.3	0.37	12.6	7.30	530
Inverse	1.5/6	2-8	1.00	2.7	2.9	6.5	0.35	1.70	1.00	73
Inverse	1.5/6	4-16 10-40 20-80	0.96	2.6	2.8	6.3	0.34	1.70	0.97	70
Inverse	4/16	2-8	0.23	0.41	0.47	7.5	0.49	0.28	0.16	12
Inverse	4/16	4-16	0.18	0.38	0.42	6.7	0.42	0.25	0.15	10.5
Inverse	4/16	10-40 20-80	0.15	0.37	0.40	6.1	0.38	0.24	0.14	10.0
Very Inverse	0.5/2	All Ranges	2.10	4.80	5.20	1.3	0.40	4.90	4.20	130
Very Inverse	1.5/6	2-8	0.32	0.60	0.68	1.5	0.47	0.64	0.55	17
Very Inverse	1.5/6	4-16 10-40 20-80	0.25	0.51	0.57	1.3	0.44	0.53	0.46	14
Very Inverse	4/16	2-8	0.14	0.13	0.19	3.0	0.73	0.18	0.15	4.7
Very Inverse	4/16	4-16	0.09	0.11	0.14	2.2	0.64	0.13	0.11	3.5
Very Inverse	4/16	10-40 20-80	0.06	0.10	0.12	1.9	0.50	0.11	0.10	3.0
Extremely Inverse	0.5/2	All Ranges	1.12	1.40	1.80	0.46	0.62	1.80	1.79	46
Extremely Inverse	1.5/6	2-8	0.17	0.26	0.31	0.70	0.55	0.31	0.30	7.8
Extremely Inverse	1.5/6	4-16	0.14	0.18	0.24	0.54	0.58	0.24	0.23	6.0
Extremely Inverse	1.5/6	10-40 20-80 40-160	0.13	0.16	0.21	0.47	0.62	0.21	0.20	5.2
Extremely Inverse	4/16	4-16	0.045	0.065	0.079	1.26	0.57	0.079	0.078	1.98
Extremely Inverse	4/16	10-40	0.038	0.048	0.061	0.98	0.62	0.061	0.060	1.53
Extremely Inverse	4/16	20-80	0.036	0.042	0.055	0.88	0.65	0.055	0.054	1.38

\* The impedance values given are those for the minimum tap of each relay. The impedance for other taps, at pick-up current (tap rating), varies inversely approximately as the square of the current rating. Example: for the type JBCG51E relay, 0.5/2 amperes the impedance of the 0.5 ampere tap is 21.1 ohms. The impedance of the 1 ampere tap, at 1 ampere, is approximately  $(0.5/1)^2 \times 21.1 = 5.28$  ohms.

+ Some companies list relay burdens only as the volt-ampere input to operate at minimum pickup. This column is included so a direct comparison can be made. It should not be used in calculating volt-ampere burdens in a CT secondary circuit, since the burden at 5 amperes is used for this purpose.

† Calculated from burden at minimum pickup.

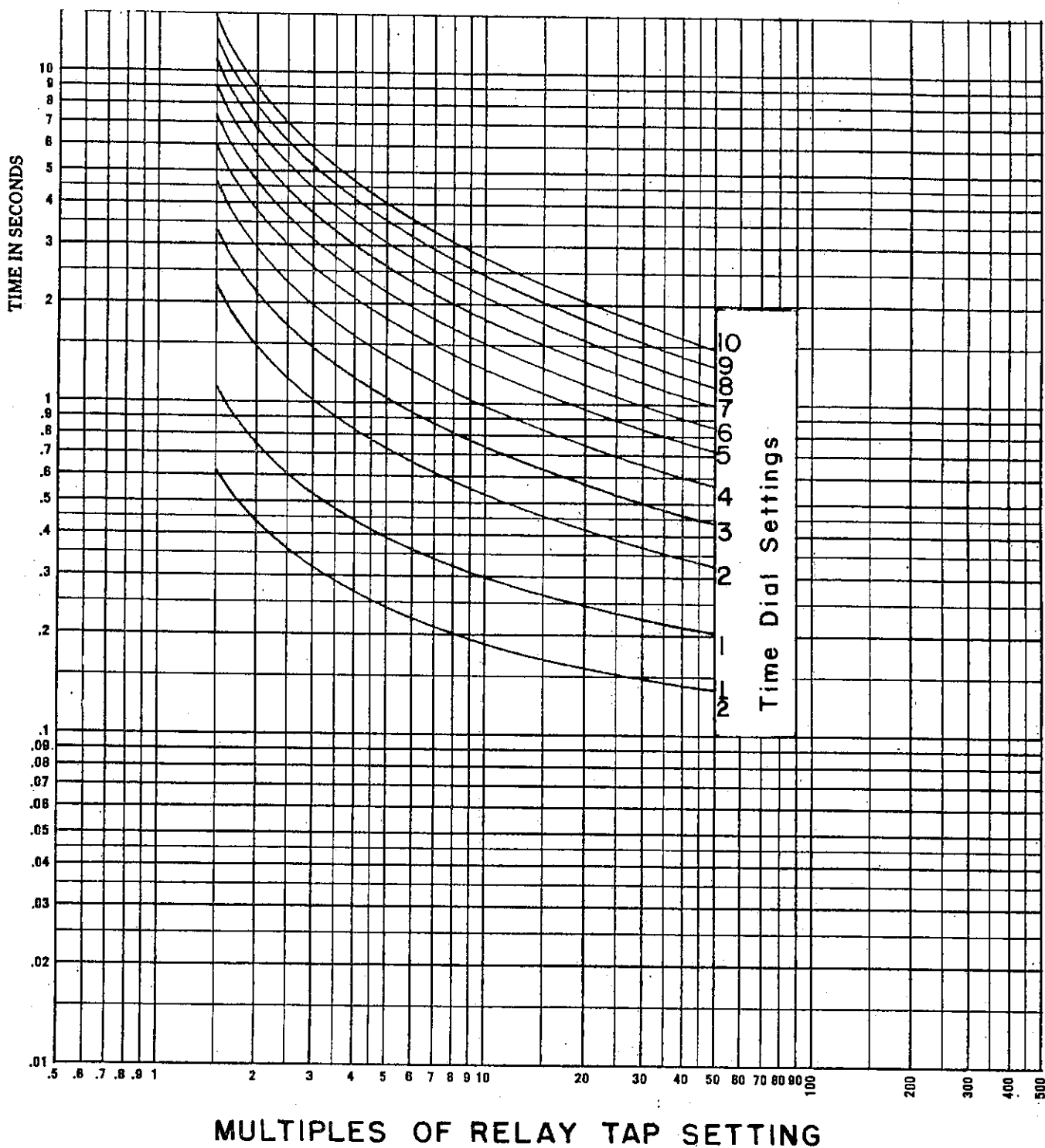


Fig. 6 (0888B0269-0) Time-Current Curves For Inverse Time Overcurrent Unit. (JBCG51 And JBCG52).

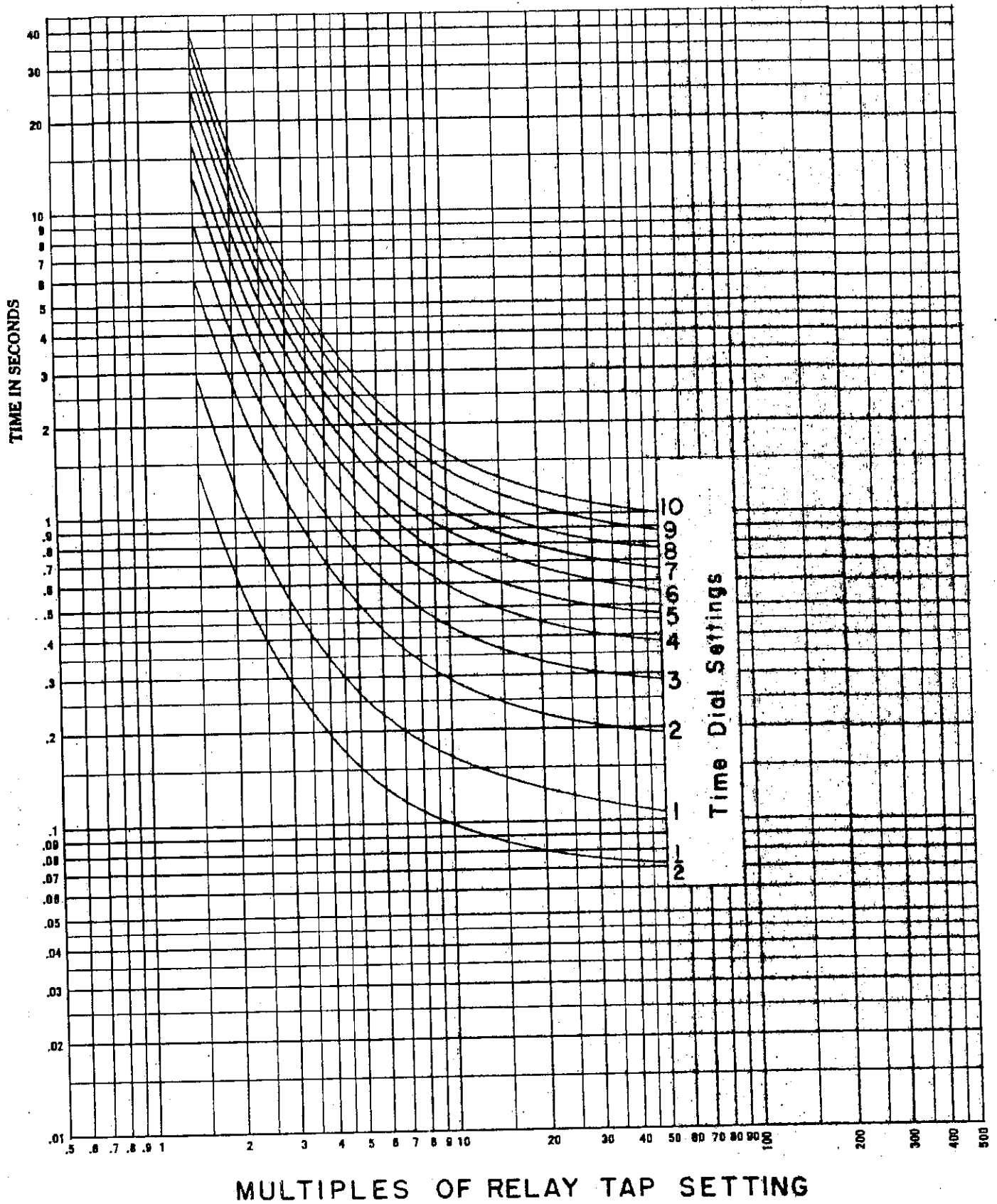


Fig. 7 (0888B0270-0) Time-Current Curves For Very Inverse Time Overcurrent Unit. (JBCG53 And JBCG54).

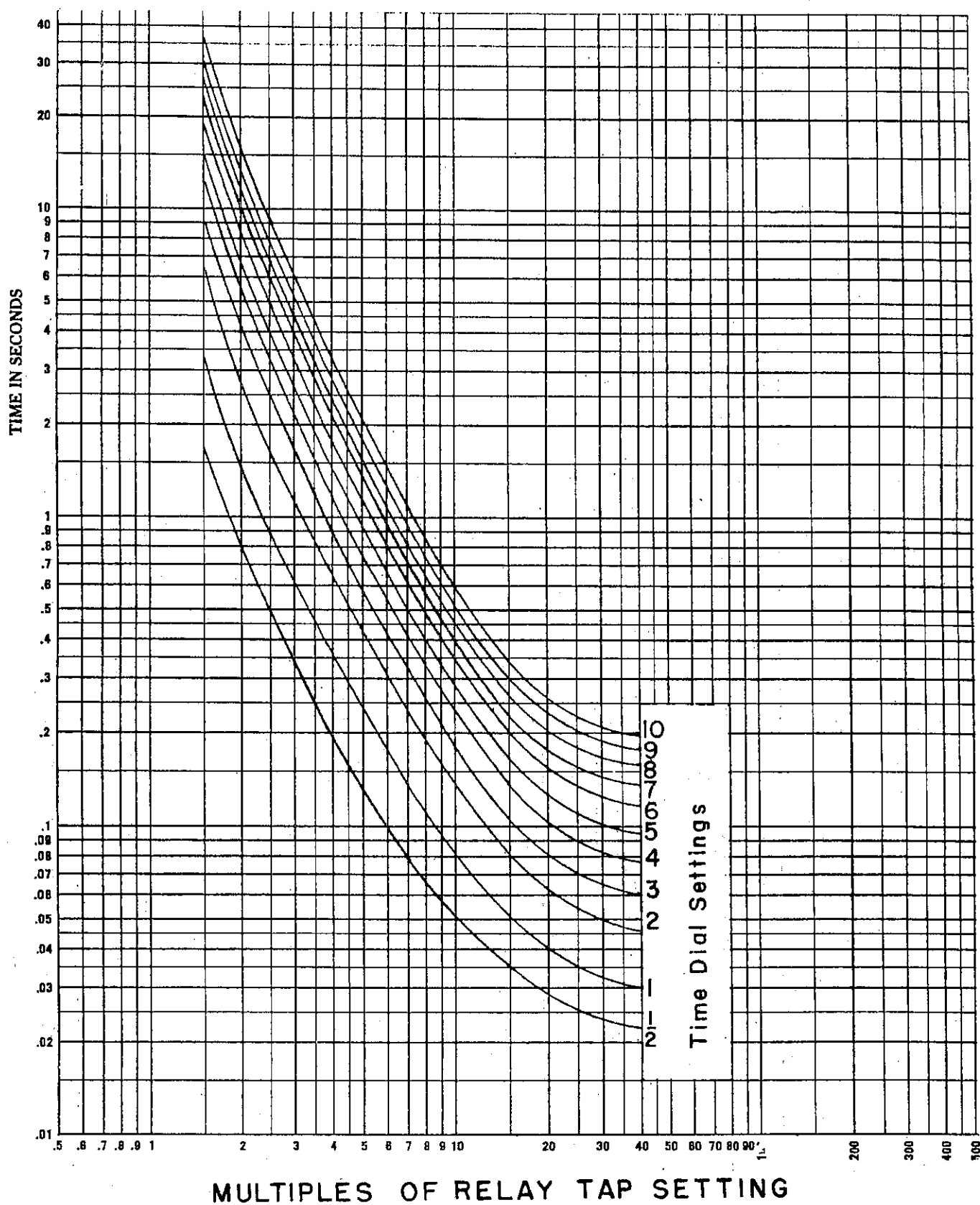


Fig. 8 (0838B77-1) Time-Current Curves For Extremely Inverse Time Overcurrent Unit (JBCG77 And JBCG78).

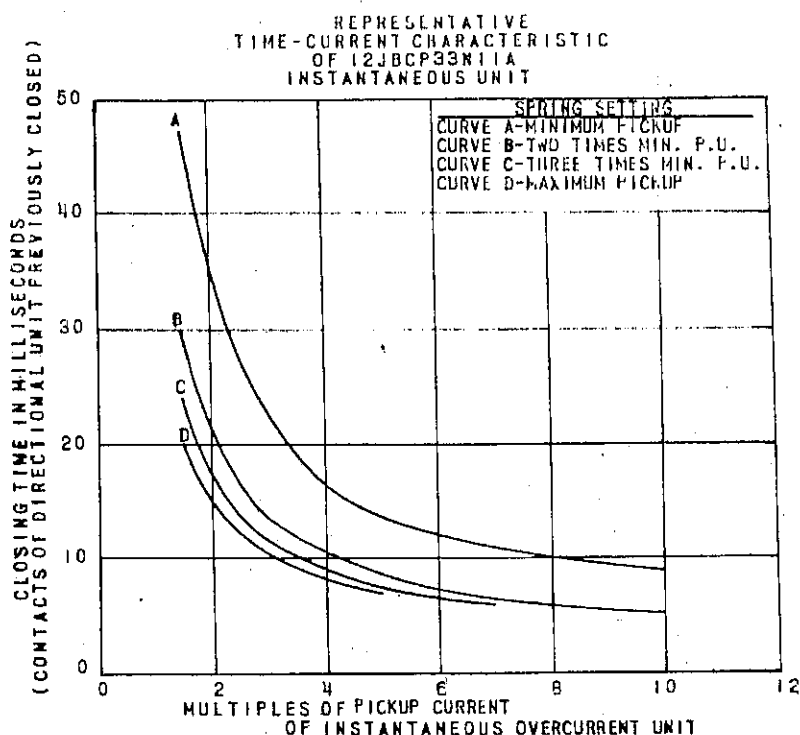


Fig. 9 (6750) (3-2) Instantaneous Overcurrent Unit Time Curve

circuit. When power flow is in such a direction as to close a directional unit contacts, the unit develops torque on the operating disk.

The disk shaft carries the moving contact which completes the trip circuit when it touches the stationary contact or contacts. The shaft is restrained by a spiral spring to give the proper contact-closing current, and its motion is retarded by a permanent magnet acting on the disk to produce the desired time characteristic. The variable retarding force resulting from the gradient of the spiral spring is compensated by the spiral shape of the induction disk, which results in an increased driving force as the spring winds up.

The torque control circuits of both the time overcurrent and instantaneous overcurrent units are wired to terminals on the relay contact block. These terminals are shorted together by internally connected red jumper leads when the relays leave the factory (See Figure 10 through Figure 13). If external torque control is desired, these jumper leads should be removed.

#### DIRECTIONAL UNIT

The directional unit is of the induction-cylinder construction with a laminated stator having eight poles projecting inward and arrangement symmetrically around a stationary central core. The cup-like aluminum induction rotor is free to operate in the annular air gap between the poles and the core.

The poles are fitted with current operating, current polarizing, and potential polarizing coils.

The principle by which torque is developed is the same as that of an induction disk relay with a wattmetric element, although, in arrangement of parts, the unit is more like a split-phase induction motor. The induction-cylinder construction provides higher torque and lower rotor inertia than the induction-disk construction resulting in a faster and more sensitive unit.

#### INSTANTANEOUS OVERCURRENT UNIT

This unit is similar in construction to the directional unit described above, differing only in coil turns and connections. The four corner coils consist of two windings, an inner winding consisting of a large number of turns of fine wire, and an outer winding having a few turns of heavy wire. The outer windings of the corner coils, together with the four side coils, are all connected in series with the operating coil of the time overcurrent unit. The inner windings of the corner coils are all connected in series, and in turn are connected in series with a capacitor and a contact of the directional unit. This circuit controls the torque of the instantaneous overcurrent unit. When the directional unit contacts are open, the instantaneous unit will develop no torque. When the directional unit contacts are closed, the instantaneous unit will develop torque in proportion to the square of

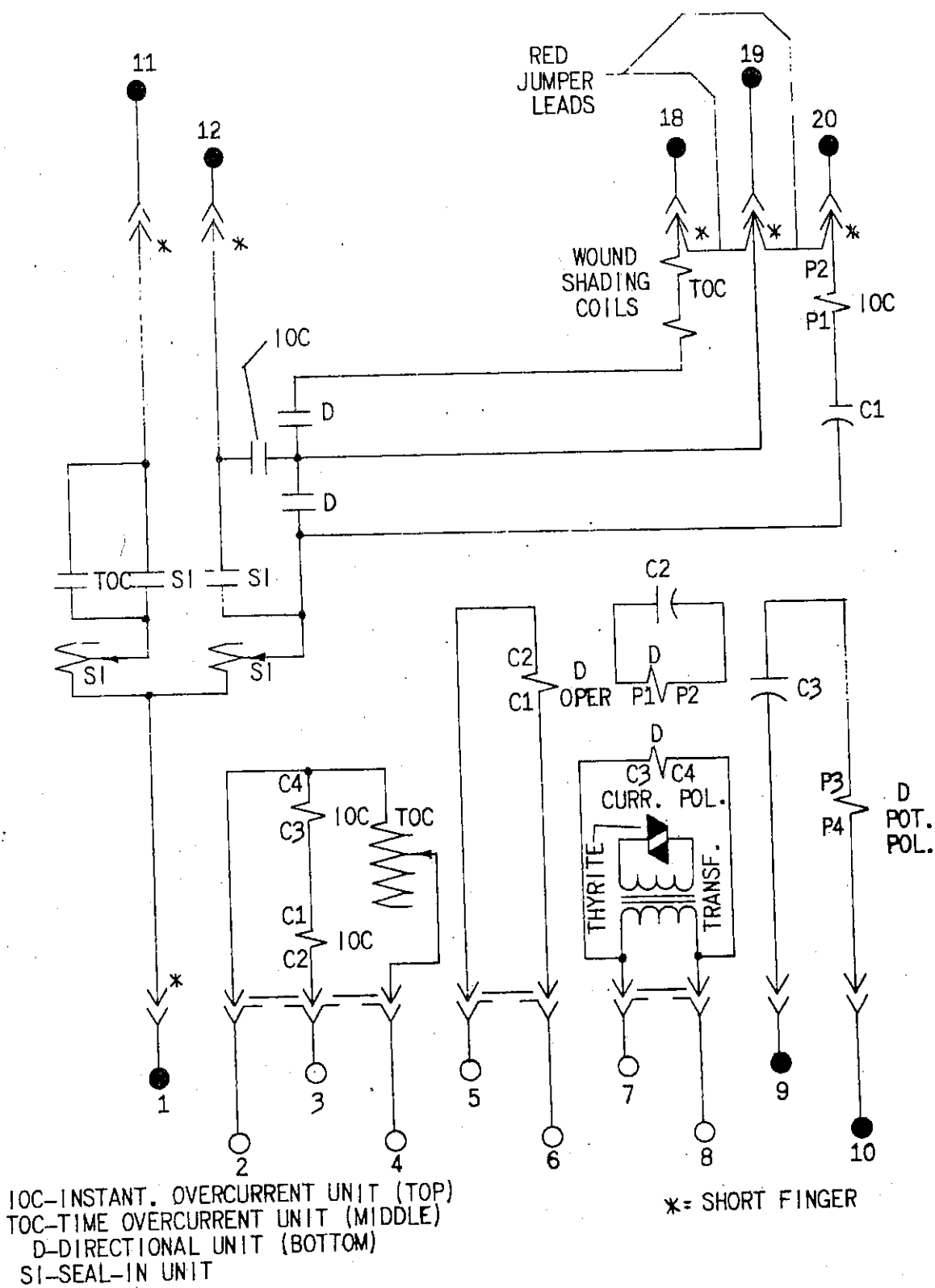


Fig. 10 (0104A8978-1) Internal Connections For The Type JBCG51K Relay, (Front View)

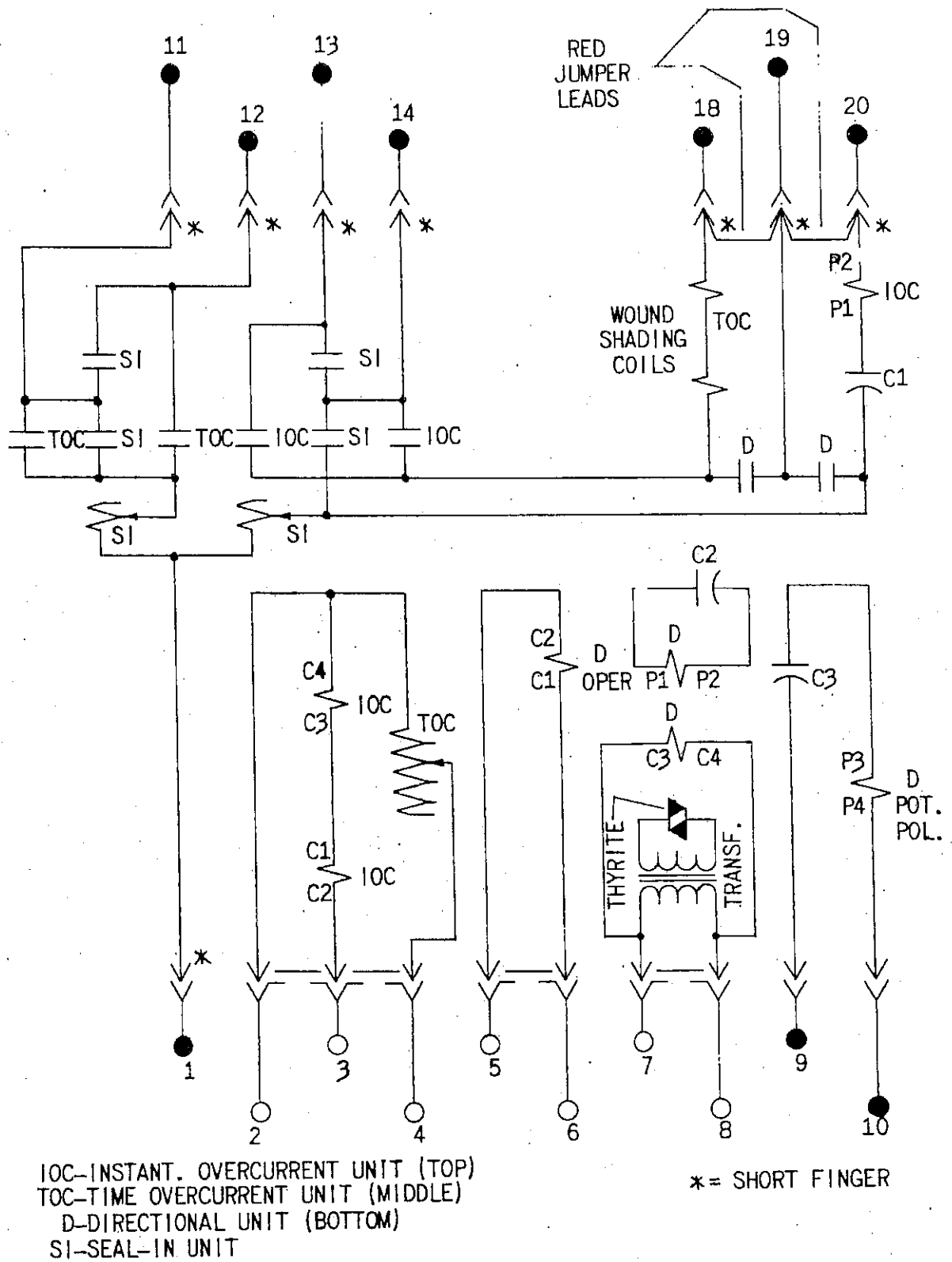


Fig. 11 (0104A8979-0) Internal Connections For The Type JBCG52K Relay. (Front View)



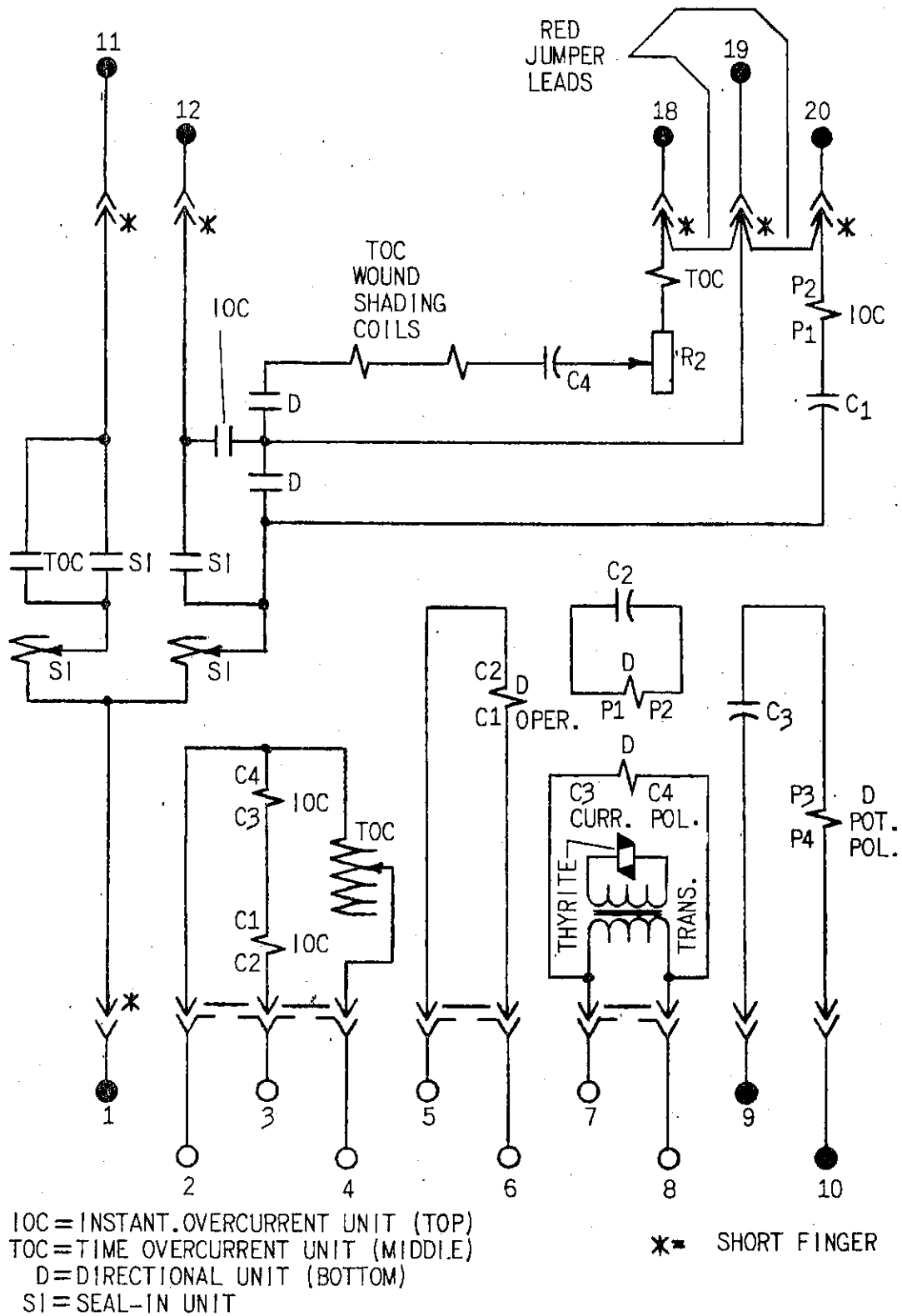


Fig. 12 (0127A9429-1) Internal Connections For The Type JBCG77K Relay. (Front View)

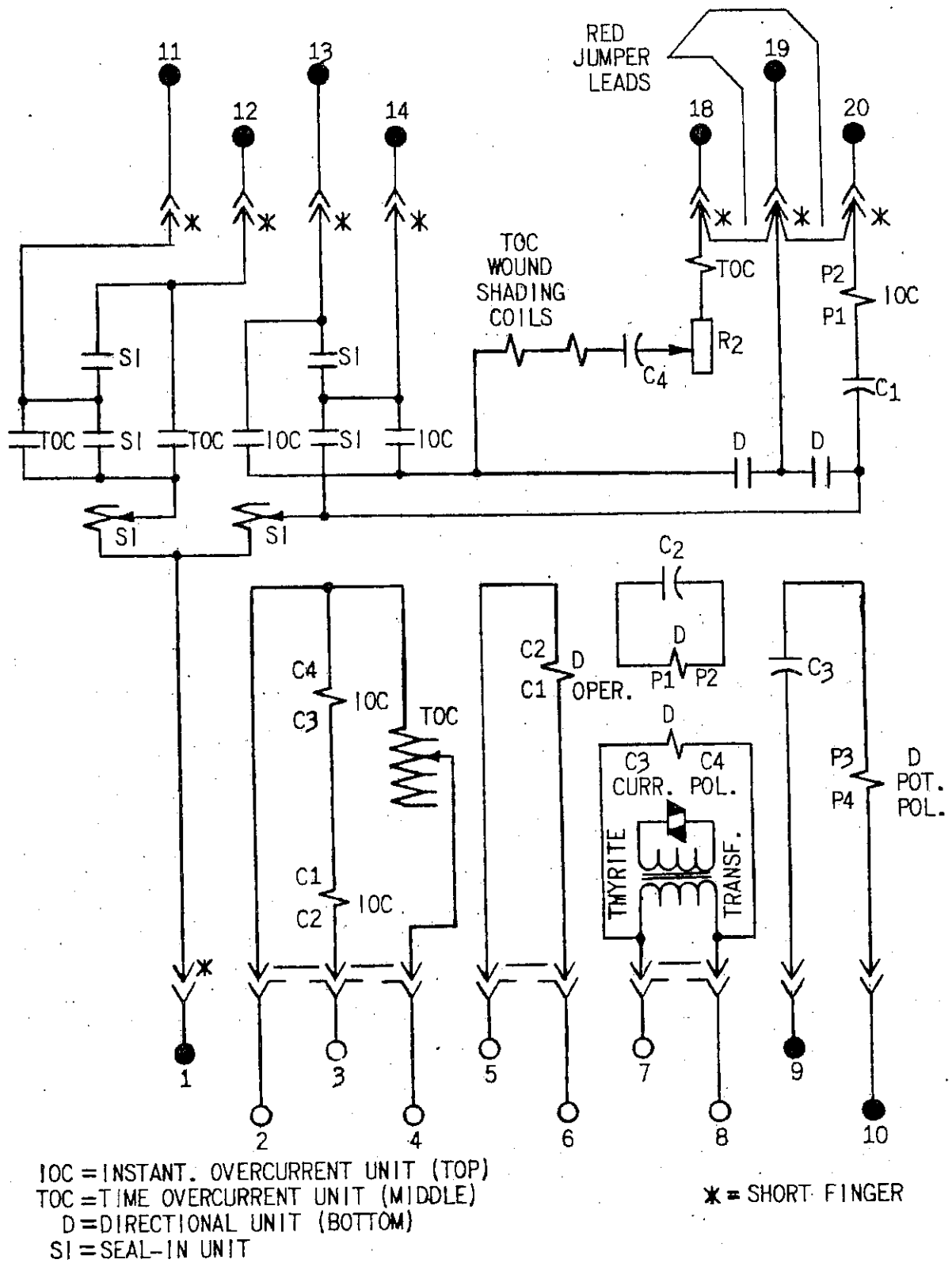


Fig. 13 (0127A9430-0) Internal Connections For The Type JBCG78K Relay. (Front View)

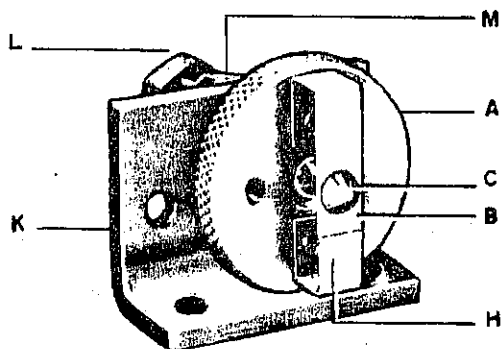


Fig. A

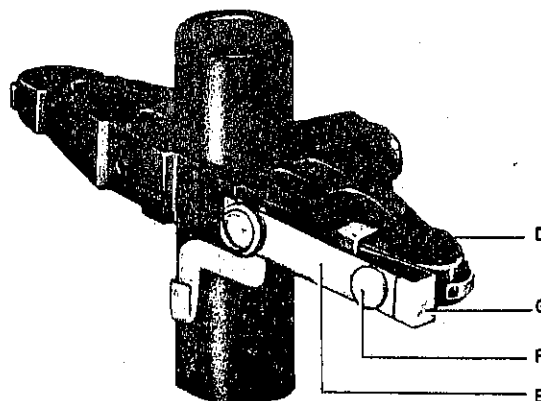


Fig. B

Fig. 14 Low Gradient Contact Assembly For The Directional Unit. Fig. A (8023401), Fig. B (8023399)

the current.

The instantaneous overcurrent unit develops operating torque in a direction opposite to that of the directional unit. This makes the relay less susceptible to the effects of shock.

#### SEAL-IN UNIT

The seal-in units for both the time-overcurrent and instantaneous-overcurrent contacts are mounted on the middle units, as indicated in Figure 1.

The left seal-in unit operates in conjunction with the time-overcurrent unit contacts and is labeled "TIME". Its coil is in series and its contacts in parallel with the main contacts of the time-overcurrent unit so that when the main contacts close, the seal-in unit will pick up and seal-in around the main contact.

The right seal-in unit, labeled "INST." operates in conjunction with the instantaneous overcurrent unit. Its coil is in series with the instantaneous-unit contact and a contact of the directional unit, and its contact is connected to seal-in around these two contacts when the unit operates.

Both seal-in units are equipped with targets which are raised into view when the unit operates. These targets latch and remain exposed until manually released by means of the button projecting below the lower-left corner of the cover.

#### CONTACTS

##### LOW GRADIENT CONTACT

The directional unit contacts (left front), which control the time overcurrent unit, are shown in Figure 14. They are of the low gradient type specially constructed to minimize the effects of vibration. Both the stationary and moving contact brushes are made of low gradient material which, when subjected to vibration, tend to follow one another, hence, they resist contact separation.

The contact dial (A) supports the stationary contact brush (B) on which is mounted a conical contact tip (C). The moving contact arm (D) supports the moving contact brush (E) on which is mounted a button contact tip (F). The end of the moving contact brush bears against the inner face of the moving contact brush retainer (G). Similarly, the end of the stationary contact brush bears against the inner face of the stationary contact brush retainer (H). The stationary contact support (K) and the contact dial are assembled together by means of a mounting screw (L) and two locknuts (M).

##### BARREL CONTACT

The directional unit contacts (right rear) which control the instantaneous overcurrent unit, are shown in Figure 15. They are specially constructed to suppress bouncing. The stationary contact (G) mounted on a flat spiral spring (F) backed up by a slightly inclined tube (A). A stainless steel ball (B)

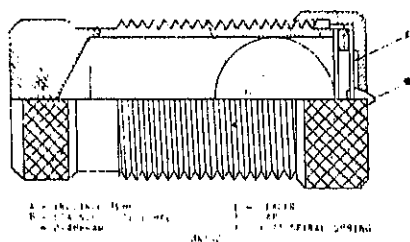


Fig. 15 (8077000-3) Barrel Contact Assembly For Directional Unit And Instantaneous Overcurrent Unit.

is placed in the tube before the diaphragm is assembled. When the moving contact hits the stationary contact, the energy of the former is imparted to the latter and thence to the ball, which is free to roll up the inclined tube. Thus, the moving contact comes to rest with substantially no rebound or vibration. To change the stationary contact mounting spring, remove the contact barrel and sleeve as a complete unit after loosening the screw at the front of the contact block. Unscrew the cap (E). The contact and its flat spiral mounting spring may then be removed.

#### RECEIVING, HANDLING AND STORAGE

These relays, when not included as a part of a control panel will be shipped in cartons designed to protect them against damage. Immediately upon receipt of a relay, examine it for any damage sustained in transit. If injury or damage resulting from rough handling is evident, file a damage claim at once with the transportation company and promptly notify the nearest General Electric Apparatus Sales Office.

Reasonable care should be exercised in unpacking the relay in order that none of the parts are injured or the adjustments disturbed.

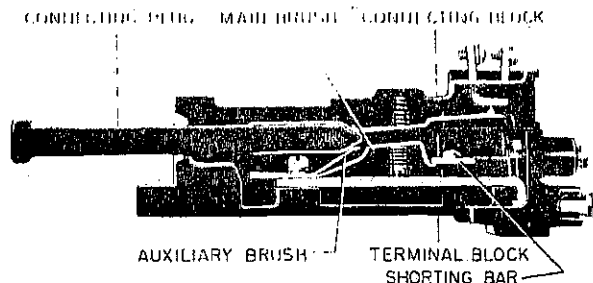
If the relays are not to be installed immediately, they should be stored in their original cartons in a place that is free from moisture, dust and metallic chips. Foreign matter collected on the outside of the case may find its way inside when the cover is removed and cause trouble in the operation of the relay.

#### ACCEPTANCE TESTS

Immediately upon receipt of the relay an INSPECTION AND ACCEPTANCE TEST should be made to insure that no damage has been sustained in shipment and that the relay calibrations have not been disturbed. If the examination or test indicates that readjustment is necessary, refer to the section on SERVICING.

#### VISUAL INSPECTION

Check the nameplate stamping to insure that the model number and rating of the relay agree with the



NOTE AFTER ENGAGING AUXILIARY BRUSH, CONNECTING PLUG TRAVELS 1/4 INCH BEFORE ENGAGING THE MAIN BRUSH ON THE TERMINAL BLOCK.

Fig. 16 (8077000-3) Cross Section Of Drawout Case Showing Position Of Auxiliary Brush And Shorting Bar.

requisition.

Remove the relay from its case and check that there are no broken or cracked molded parts or other signs of physical damage and that all screws are tight. Check that the shorting bars are in the proper location (s) and that they are properly formed (See Figure 16).

#### MECHANICAL INSPECTION

##### A. TOP UNIT (IOC)

1. The rotating shaft end play should be 0.015 - 0.020 inches.
2. The contact gap should be 0.028 - 0.036 inches.
3. There should be no noticeable friction in the rotating structure.
4. With the relay well leveled and in its upright position, the contact should be open and resting against the backstop.

##### B. MIDDLE UNIT (TOC)

1. The disk shaft end play should be 0.005 - 0.015 inches.
2. The disk should be centered in the air gaps of both the electro magnet and drag magnet.
3. Both gaps should be free of foreign matter.
4. The disk should rotate freely.
5. The moving contact should just touch the stationary contact when the time dial is at the zero time dial position.

##### C. BOTTOM UNIT (DIR)

1. The rotating shaft end play should be 0.015 - 0.020 inches.
2. The contact gap should be 0.015 - 0.025 inches on the low gradient front contact.
3. The front contact should close approximately 0.005 to 0.010 inches before the rear contacts

##### D. TARGET SEAL IN UNIT

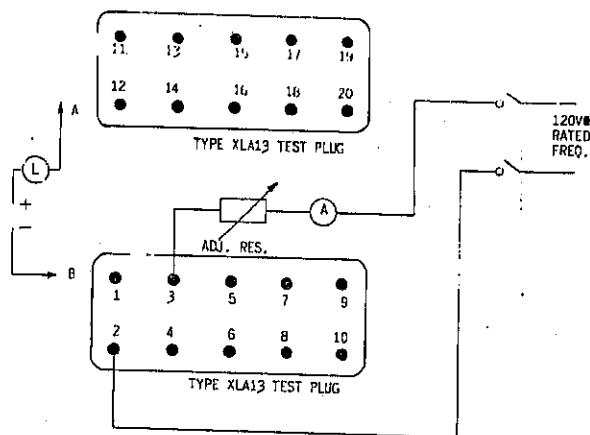
1. Both contacts should make at approximately the same time.
2. The target should latch into view just as the contacts make.
3. The contacts should have approximately .030 inch wipe.

##### E. ELECTRICAL TESTS

(To properly duplicate operating conditions all electrical tests should be conducted with the relay reasonably level and in its case.)

##### 1. TOP UNIT (IOC)

- a. Connect relay per Figure A of Test Con-



RELAY TYPE	CONNECT	
	A	B
JBCG 51	12	19
53	12	19
77	12	19
52	13	19*
54	13	19*
78	13	19*

\*BLOCK DIRECT UNIT  
CONTACTS CLOSED

Fig. 17A (0178A9035-0) Test Connections For Checking Pick-up Of IOC Unit.

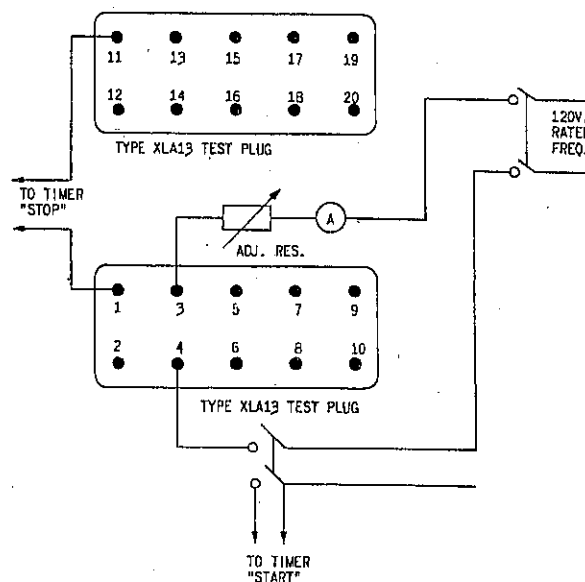


Fig. 17B (0178A9036-0) Test Connections For Checking TOC Unit.

nections (Figure 17).

- b. Block directional unit contacts closed.
- c. Unit should close its contacts within plus or minus 5% of the minimum pickup current range.
- d. Apply the maximum current pickup of the unit; it should not be necessary to wind the control spring more than one turn (360 degrees) to just balance the restraining and operating torques.
- e. Reset the control spring for minimum pickup.
- f. The clutch should not slip at six times pickup current. It may, however, slip at eight times pickup current.
- g. Open the directional unit contacts. At 20 times pickup current the instantaneous unit should not operate.
2. MIDDLE UNIT (TOC)
  - a. Connect relay per Figure B of Test Connections (Figure 17).
  - b. Block directional unit contacts closed.
  - c. Set tap screw in lowest tap and the time dial at the 0.5 time dial position. The unit should close its contacts within plus or minus 5% of the tap value.
  - d. In a like manner, each of the other taps may be checked.
  - e. To check the time curve, set the tap screw in the minimum tap and the time dial at the 5 time dial position. Apply 5 times pickup current, the operating time should be:

Relay Type	Oper. Time (seconds $\pm 5\%$ )
Inverse	1.78
Very Inverse	1.31
Extremely Inverse	0.93

- f. Open the directional unit contacts. At 20 times pickup current the time-overcurrent unit (TOC) should not operate.
- 3A BOTTOM UNIT (Current Polarization)
  - a. Connect per Figure C of Test Connections (Figure 17).
  - b. The unit should close its contacts within 5% of 0.5 ampere. The clutch should slip between 8-18 amperes.
- 3B BOTTOM UNIT (Potential Polarization)
  - a. Connect per Figure D of Test Connections. (Figure 17)
  - b. With V set for 5 volts the unit should close its contacts between 0.75-1.65 amperes.
4. TARGET SEAL-IN UNIT
  - a. The unit should pickup between 85 and 100% of the tap value and drop out at 25% or more of tap value.

#### INSTALLATION PROCEDURE

#### LOCATION

The location of the relay should be clean and dry, free from dust, excessive heat and vibration,

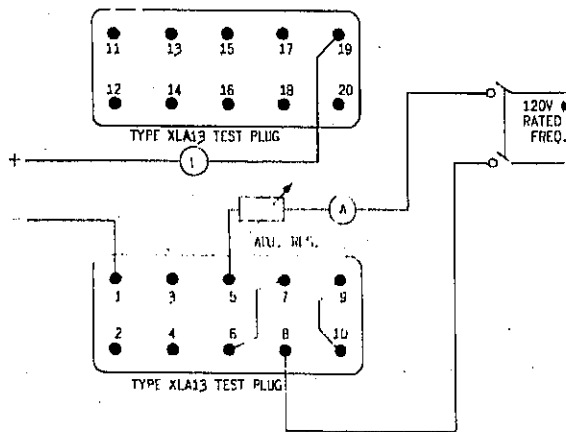


Fig. 17C (0178A9037-0) Test Connections For Checking Pickup Of Directional Unit Using Current Polarization.

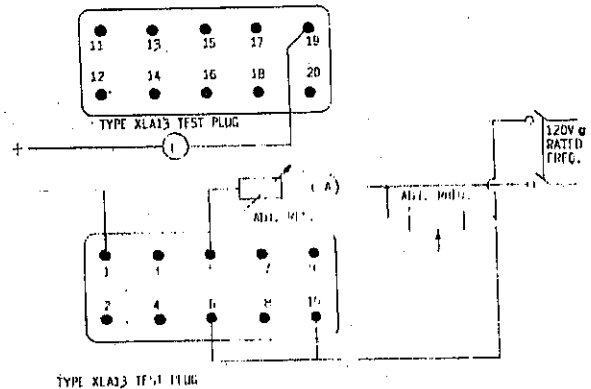


Fig. 17D (0178A9038-0) Test Connections For Checking Pickup Of Directional Unit Using Potential Polarization.

and should be well lighted to facilitate inspection and testing.

#### MOUNTING

The relay should be mounted on a vertical surface. The outline and panel drilling dimensions are shown in Figure 18.

#### CONNECTIONS

The Internal Connections are shown in Figures 10, 11, 12 & 13.

#### VISUAL INSPECTION

Remove the relay from its case and check that there are no broken or cracked component parts and that all screws are tight.

#### MECHANICAL INSPECTION

Recheck the adjustments mentioned under Mechanical Inspection in the section on ACCEPTANCE TESTS.

#### ELECTRICAL TESTS

1. TOP UNIT (IOC)
  - a. Connect per Figure A of Test Connection (Figure 17).
  - b. Block the directional unit contacts closed.
  - c. Loosen the hexagonal clamping screw which holds the control spring adjusting ring.
  - d. Adjust the control spring for the desired pickup.
  - e. Retighten the hexagonal clamping screw and recheck pickup.
2. MIDDLE UNIT (TOC)
  - a. Connect per Figure B of Test Connections (Figure 17).

- b. Block the directional unit contacts closed.
  - c. Set the tap screw in the desired tap and the time dial at the 0.5 time dial position. Check that pickup is within 5% of the selected tap. If it is desired to set pickup for some value other than tap value, the control spring may be adjusted for any value between taps.
  - d. Apply the calculated multiples of pickup and set the time dial for the desired operating time. Fine adjustment of time may be obtained by moving the permanent magnet (drag magnet) in or out along the supporting shelf.
3. BOTTOM UNIT (Directional Unit)
  - a. Connect per Figure C of Test Connections (Figure 17).
  - b. Adjust the control spring for 0.5 Ampere pickup if current polarized or dual polarized.
  - c. If potential polarized connect per Figure D of Test Connections (Figure 17).
  - d. Adjust the control spring for 7.2 Volt amperes ( $\pm 10\%$ ). Twenty volts and 0.36 amperes are recommended values for this test.
4. TARGET SEAL-IN UNITS
  - a. The unit should pickup between 85 and 100% of the tap value and drop out at 25% or more of tap value.

#### PERIODIC CHECKS AND ROUTINE MAINTENANCE

In view of the vital role of protective relays in the operation of a power system it is important that a periodic test program be followed. It is recognized that the interval between periodic checks will vary depending upon environment, type of relay, and the user's experience with periodic testing. Until the user has accumulated enough experience to select the test interval best suited to his in-

dividual requirements it is suggested that the points listed INSTALLATION PROCEDURE be checked at an interval of from one to two years.

#### CONTACT CLEANING

Check that the contacts are clean and burnish where necessary.

For cleaning fine silver contacts, a flexible burnishing tool should be used. This consists of a flexible strip of metal with an etched-roughened surface resembling in effect a superfine file. The polishing action is so delicate that no scratches are left, yet it will clean off any corrosion thoroughly and rapidly. Its flexibility insures the cleaning of the actual points of contact. Do not use knives, files, abrasive paper or cloth of any kind to clean relay contacts.

#### SERVICING

If it is found during the installation or periodic tests that the unit calibrations are out of limits, they should be recalibrated as outlined in the following paragraphs. It is suggested that these calibrations be made in the laboratory. The circuit components listed below, which are normally considered as factory adjustments, are used in recalibrating the units. These parts may be located from Fig. 1 and 2.

#### TOP UNIT (IOC)

The clutch adjustment is made by means of a screw located on the right hand side (front view) of the moving contact assembly. Turning the screw in increases the value of current at which the clutch will slip.

The control spring adjustment for setting pickup has been previously described in the Installation section.

#### MIDDLE UNIT (TOC)

Extremely inverse relays only.

In addition to the control spring setting for setting pickup, there is a resistor (R2) for adjusting the torque level.

If the control spring has been replaced, the resistor must be readjusted as follows:

1. Unwind the control spring until the moving contact just "floats" at the 1 time dial position.
2. Wind the control spring two full turns (720°).
3. Set the resistor in its mid range.
4. Connect per Figure A of Test Connection (Figure 17).
5. Check pickup per acceptance tests.
6. Make adjustments in resistor setting to obtain proper pickup.

#### BOTTOM UNIT (Directional)

The contact construction has been previously described in the "Construction" Section.

#### CONTACT ADJUSTMENTS

To facilitate adjustment of contacts, remove the two red jumper leads from terminals 18, 19, and 20

and use a neon indicating lamp in series with an AC voltage supply across terminals 18 and 19 and 19 and 20 to signify all contact closures. Refer to Fig. 15 and Fig. 14 for identification of barrel and low gradient contact parts respectively and proceed as follows:

Loosen slightly the screw which secures the barrel backstop (located at the right front corner of the unit) to its support. This screw should be only loose enough to allow the barrel to rotate in its sleeve but not so loose as to allow the sleeve to move within the support. Unwind the barrel backstop so that the moving contact arm is permitted to swing freely. Adjust the tension of each low gradient contact brush so that 1-2 grams of pressure are required at the contact tip in order to cause the end of the brush to separate from the inner face of its respective brush retainer. Adjust the spiral spring until the moving contact arm is in a neutral position, i.e., with the arm pointing directly forward. Loosen the locknut which secures the low gradient stationary contact mounting screw to the stationary contact support. Wind the mounting screw inward until the low gradient stationary and moving contact members just begin to touch. Unwind the mounting screw until the stationary contact brush is vertical with the stationary contact brush retainer down. Then tighten the locknut which secures the mounting screw to the stationary contact support.

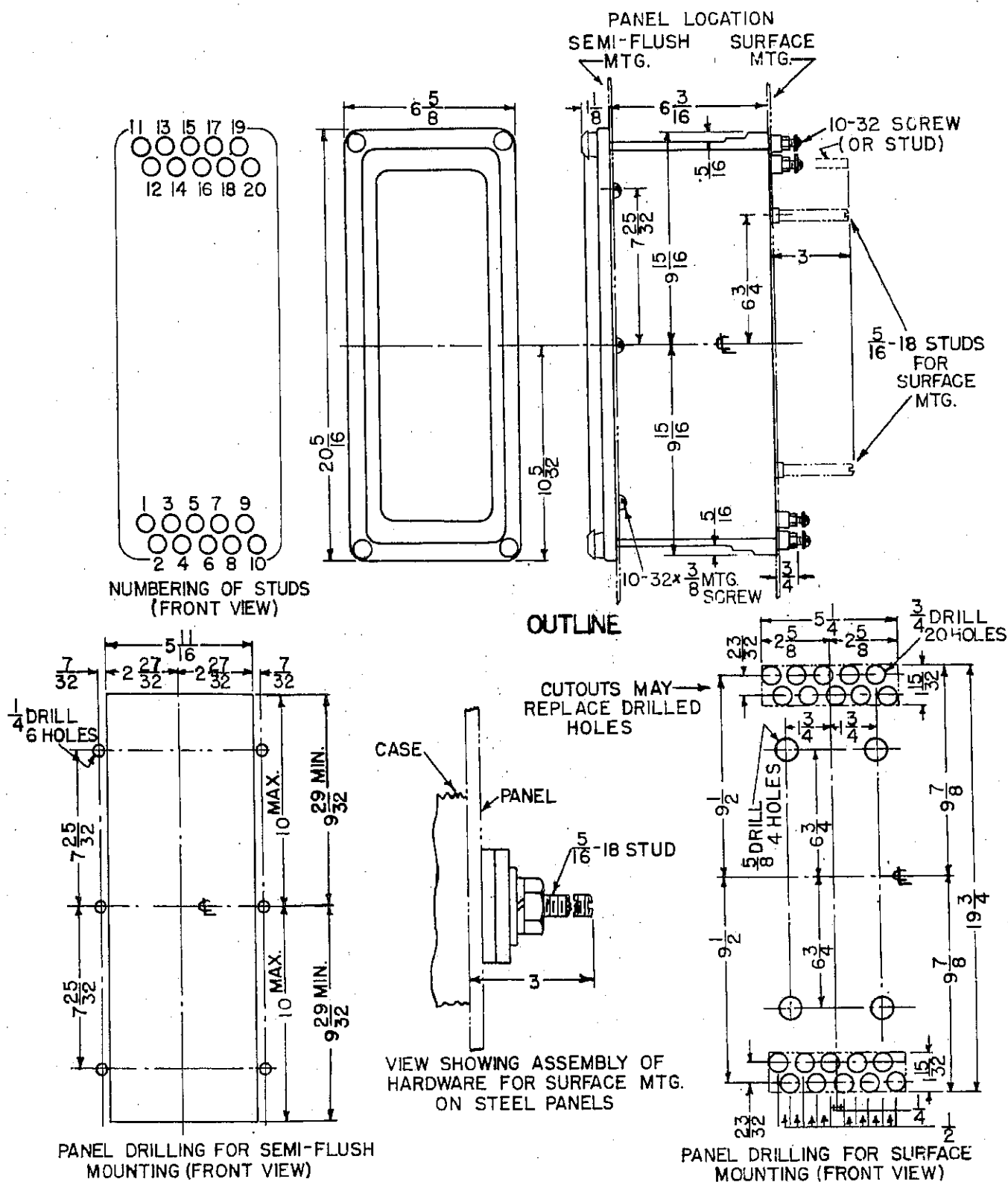
Loosen slightly the screw which secures the barrel contact to its support. This screw should be only loose enough to allow the barrel to rotate in its sleeve, but not so loose as to allow the sleeve to move within the support. Wind the barrel backstop in until the low gradient moving and stationary contact members just begin to touch. Wind the barrel contact in until the barrel contacts just begin to touch. Unwind the barrel contact 1/4 turn. Tighten the screw which secures the barrel contact to its support. Make sure that this screw is not so tight that it prevents the ball from rolling freely within the barrel. Finally, adjust the tension on the low gradient stationary contact brush such that, when the low gradient contacts are made and fully wiped in, there is approximately an equal deflection on each brush.

**CAUTION:** When the above adjustments are complete, be sure to replace the two red jumper leads.

#### BIAS ADJUSTMENT

Connect the current operating and current polarizing coils in series by connecting a jumper across terminals 6 and 7. Apply current to terminals 5 and 8 and adjust the directional unit spiral spring so that the unit picks up at 0.5 ampere.

The core of the directional unit has a small flat portion, the purpose of which is to minimize the effect of bias torques produced on the rotor. Such torques can be produced by any one of the operating or polarizing quantities acting alone with the other two circuits de-energized. The adjustment of the core is made at the factory, but may be checked by observing that the unit responds as



- Fig. 18 (6209276-1) Outline And Panel Drilling Dimensions For Type JBCG Relays.



outlined below:

Short out the potential polarizing coil (terminals 9 and 10), leaving the current polarizing coil (terminals 7 and 8) unshorted. Supply 30 amperes through the operating coil (terminals 5 and 6) and check that the unit does not operate.

If the unit does not satisfy the above conditions, rotate the core to a position which causes it to do so. The core can be turned by loosening the large hexagonal nut at the bottom of the unit and turning the core by means of the slotted bearing screw. This screw should be held securely in position when the nut is retightened.

Keep in mind that thirty amperes will cause the current coils to overheat if left on too long.

Therefore, leave the test current on only for short intervals and allow sufficient time between tests for the coils to cool.

#### RENEWAL PARTS

It is recommended that sufficient quantities of renewal parts be carried in stock to enable the prompt replacement of any that are worn, broken, or damaged.

When ordering renewal parts, address the nearest Sales Office of the General Electric Company, specify quantity required, name of the part wanted, and give complete nameplate data. If possible, give the General Electric requisition number on which the relay was furnished.

# GENERAL ELECTRIC SALES OFFICES

GEZ-2900-P

READY TO ASSIST YOU ... When You Have Electrical Problems ... Need Further Information ... Require Ordering Instructions

## KEY TO SALES OPERATIONS

- A - Agency & Distributor
- C - Company Sales
- I - Industrial Sales
- M - Marine & Defense Facilities Sales
- U - Electric Utility Sales

**ALABAMA**  
A C I U Birmingham 35305 ... 2151 Highland Ave.  
I Huntsville 35891 ... 3322 Memorial Pkwy S.  
A I Mobile 36606 ... 1111 S. Beltline Hwy.  
A Montgomery 36107 ... 512 Madison Ave.

**ARIZONA**  
A C I U Phoenix 85012 ... 3550 N. Central Ave.  
A I Tucson 85711 ... 40 No. Swan Rd.

**ARKANSAS**  
A C I H. Little Rock 72116 ... 120 Main St.  
U Pine Bluff 71602 ... P. O. Box 1033

**CALIFORNIA**  
C Burlingame 94010 ... 1875 Rollins Rd.  
A I Emeryville 94608 ... 5000 Second St.  
A I Fresno 93726 ... 1532 N. West Ave.  
A Los Angeles 90015 ... 1543 W. Olympic Blvd.  
A I M U Los Angeles 90004 ... 213 N. Vine St.  
A U Sacramento 95805 ... 2407 "J" St.  
A M U San Diego 92103 ... 3580 First Ave.  
A I M U San Francisco 94106 ... 215 Montgomery Ave.  
A Santa Clara 95050 ... 1400 Coleman Ave.

**COLORADO**  
A C I U Denver 80206 ... 201 University Blvd.

**CONNECTICUT**  
I U Hamden 06518 ... 2908 Elwell Ave.  
A C U Hartford 06105 ... 784 Asylum Ave.

**DISTRICT OF COLUMBIA**  
I M U Washington 20005 ... 777-14th St., N. W.

**FLORIDA**  
A M Cocoa Beach 32931 ... 1325 N. Atlantic Ave.  
A I U Jacksonville 32207 ... 4010 Woodcock Dr.  
A I Miami 33130 ... 4100 W. Flagler St.  
A Orlando 32803 ... 501 N. Fern Creek Ave.  
U Pensacola 32502 ... P. O. Box 1027  
A C I U Tampa 33606 ... 2106 S. Lois Ave.

**GEORGIA**  
A C I U Atlanta 30309 ... 1680 Peachtree Rd. N. W.  
A Macon 31201 ... 683 Cherry St.  
A I U Savannah 31405 ... 5002 Paulsen St.

**IDAHO**  
A U Boise 83701 ... 1524 Idaho St.

**ILLINOIS**  
A I M U Chicago 60608 ... 840 S. Canal St.  
C Oakbrook 60521 ... 1288 Harger Rd.  
A I U Peoria 61603 ... 2008 N. E. Perry Ave.  
A I Rockford 61108 ... 4223 E. State St.  
U Springfield 62701 ... 607 E. Adams St.

**INDIANA**  
A C U Evansville 47714 ... 2706 Washington Ave.  
C Fort Wayne 46804 ... 1835 Broadway  
A U Fort Wayne 46806 ... 6001 S. Anthony Bldg.  
A I U Indianapolis 46207 ... 3750 N. Meridian St.  
C Indianapolis 46240 ... 1010 E. 88th St.  
A South Bend 46601 ... 430 N. Michigan St.

**IOWA**  
C Bettendorf 52722 ... 2435 Kimberly Rd.  
U Cedar Rapids 52401 ... 210 Second St., S. E.  
A I C Davenport ... (1036 State St., Bettendorf 52722)

**MAINE**  
A U Des Moines 50310 ... 3839 Marie Hay Rd.  
U Sioux City 51101 ... 520 Pierce St.

**KANSAS**  
C Overland Park 66204 ... 7219 Medical Bl.  
C Wichita 67211 ... 820 E. Indianapolis Ave.  
U Wichita 67202 ... 104 S. Broadway Suite 1408

**KENTUCKY**  
A U Lexington 40502 ... 443 S. Ashland Ave.  
A I U Louisville 40218 ... 2308 Meadow Dr.

**LOUISIANA**  
A U Alexandria 71301 ... 2001 MacArthur Dr.  
I Baton Rouge 70815 ... 633 Oak Villa Blvd.  
I Lake Charles 70601 ... 1424 Ryan St.  
I Monroe 71361 ... 1023 N. Slush St.

A I New Orleans 70125 ... 4741 Earhart Blvd.  
U New Orleans 70112 ... 225 Baronne St.  
M New Orleans 70130 ... 930 Inter. Trade Mart.  
A U Shreveport 71101 ... 480 Travis St.

**MAINE**  
U Augusta 04300 ... 182 Main St.  
I Bangor 04402 ... 71 Central St.

**MARYLAND**  
I U Baltimore 21201 ... 1 N. Charles St.  
A Columbia 21403 ... 10221 Wincopin Circle  
U Hagerstown 21740 ... 40 E. Franklin St.  
A Salisbury 21801 ... P. O. Box 424

**MASSACHUSETTS**  
I U Boston 02117 ... 31 St. James Ave.  
I Springfield 01103 ... 128 Maple St.  
A C I M Wellesley 02151 ... 1 Washington St.

**MICHIGAN**  
A C I U Detroit 48202 ... 700 Antoinette St.  
I Flint 48502 ... 801 S. Saginaw St.  
A C I Grand Rapids 49505 ... 2821 Madison Ave., S. E.  
A U Jackson 49201 ... 210 W. Franklin St.  
I Saginaw 48601 ... 805 2nd National Bank Bldg.  
A Saginaw 48601 ... 1230 S. Washington Ave.

**MINNESOTA**  
I U Duluth 55802 ... 14 W. Superior St.  
A U Fergus Falls 56537 ... 201 1/2 Lincoln Ave., W.  
C Minneapolis 55434 ... 4018 W. 85th St.  
A I U Minneapolis 55418 ... 1800 Lohr Dr., S.

**MISSISSIPPI**  
A Gulfport 39502 ... P. O. Box 35  
A Jackson 39206 ... 332 No. Main Plaza  
U Jackson 39205 ... Rm. 917 Electric Bldg.

**MISSOURI**  
A Joplin 64602 ... 330 Wall St.  
A I U Kansas City 64103 ... 911 Main St.  
A C I U St. Louis 63101 ... 1015 Locust St.

**MONTANA**  
A Billings 59101 ... 312 Transwestern Life Bldg.  
A I U Butte 59701 ... 103 N. Wyoming St.

**NEBRASKA**  
A I U Omaha 68102 ... 408 S. 17th St.

**NEVADA**  
U Las Vegas 89106 ... 1711 S. 8th St.

**NEW HAMPSHIRE**  
U Manchester 03104 ... 48 Bay St.

**NEW JERSEY**  
C East Orange 07017 ... 56 Melmore Gardens  
A I U Millburn 07041 ... 25 E. Willow St.

**NEW MEXICO**  
A I M U Albuquerque 87108 ... 120 Madeira Dr., N. E.

**NEW YORK**  
A I M U Albany 12206 ... 8 Colvin Ave.  
U Binghamton 13900 ... 40 Front St.  
A I U Buffalo 14202 ... 635 Delaware Ave.  
A Elmford 10523 ... 44 N. Central Ave.  
A I M U New York 10022 ... 641 Lexington Ave.  
C Rochester 14618 ... 3380 Monroe Ave.  
A I U Rochester 14604 ... 339 East Ave.  
C Syracuse 13206 ... 2368 James St.  
A I U Syracuse 13206 ... 3532 James St.  
A Vestal 13805 ... P. O. Box 407

**NORTH CAROLINA**  
A C I U Charlotte 28207 ... 141 Providence Rd.  
A I Greensboro 27405 ... 401 Summit Ave.  
A U Raleigh 27603 ... 120 N. Boylan Ave.

**NORTH DAKOTA**  
A U Bismarck 58501 ... 418 Rosser Ave.

**OHIO**  
I U Akron 44312 ... 2658 W. Market St.  
A Akron 44313 (Agency & Distributor)  
U Canton 44705 ... 515 Third St., N. W.  
A C I U Cincinnati 45206 ... 2621 Victory Pkwy.  
C Cleveland 44118 ... 20950 Center Ridge Rd.  
A I M U Cleveland 44114 ... 1000 Lakeside Ave.  
C Columbus 43212 ... 627 Burrill Ave.  
A I U Columbus 43218 ... 308 E. Broad St.  
C Dayton 45402 ... 11 W. Monument Bldg.

A I U Dayton 45439 ... 3430 S. Dixie Hwy.  
C Mansfield 44902 ... 186 Park Ave., W.  
A C I Toledo 43606 ... 3450 W. Central Ave.  
U Toledo 43604 ... 430 Madison Ave.  
A I Youngstown 44407 ... 213 E. Indiana Ave.

**OKLAHOMA**  
A I Oklahoma City 73106 ... 2000 Chaspen Blvd.  
A I Tulsa 74105 ... 5138 N. Peoria Ave.  
U Tulsa 74103 ... 410 Main St.

**OREGON**  
A I Eugene 97401 ... 1170 Pearl St.  
A U Medford 97501 ... 107 E. Main St.  
A C I U Portland 97210 ... 2925 N. W. 29th Ave.

**PENNSYLVANIA**  
A I U Allentown 18102 ... 735 N. 18th St.  
A I Erie 16501 ... 5001 E. Lake Rd.  
I U Johnstown 15802 ... 841 Oak St.  
C Philadelphia 19114 ... 2417 Welsh Rd.  
A I M U Philadelphia 19102 ... 3 Penn Center Plaza  
C Pittsburgh 15234 ... 308 Mt. Lebanon Blvd.  
A I U Pittsburgh 15222 ... Oliver Bldg., Mellon Sq.  
A Williamsport 17701 ... 2300 Pink Ave.  
A I York 17403 ... 58 N. Harrison St.  
C York 17403 ... 1617 E. Market St.

**RHODE ISLAND**  
A Providence 02904 ... 1006 Charles St., N.

**SOUTH CAROLINA**  
A I U Columbia 29205 ... 2728 Devine St.  
A I Greenville 29608 ... 1403 Laurens Rd.

**SOUTH DAKOTA**  
A Sioux Falls 57105 ... 513 Main Ave.

**TENNESSEE**  
U Chattanooga 37402 ... 832 Georgia Ave.  
A C I Chattanooga 37411 ... 5800 Bldg. Ensigne Center

**TEXAS**  
U Abilene 79601 ... 442 Cedar St.  
U Amarillo 79101 ... 303 Polk St.  
A U Beaumont 77701 ... 1385 Calder Ave.  
U Corpus Christi 78401 ... 205 W. Chaparral St.  
A C I U Dallas 75247 ... 8101 Stemmons Freeway  
I U El Paso 79901 ... 215 N. Stanton St.  
A El Paso 79902 ... 2800 N. Stanton St.  
A Fort Worth 76101 ... 100 N. Univ. Dr.  
U Fort Worth 76102 ... 408 W. 7th St.  
A C I U Houston 77027 ... 4210 Richmond Ave.  
A Lubbock 79408 ... 500 E. 50th St.  
A I Midland 79704 ... 122 N. "N" St.  
A U San Antonio 78204 ... 419 S. Main Ave.

**UTAH**  
A I U Salt Lake City 84101 ... 451 E. Third E. St.  
C Salt Lake City 84110 ... 2425 S. 8th St., W.

**VERMONT**  
U Rutland 05702 ... 38 1/2 Center St.

**VIRGINIA**  
A M Newport News 23601 ... 311 Main St.  
A I Richmond 23220 ... 1508 Willow Lawn Dr.  
A I U Roanoke 24015 ... 2018 Colonial Ave., SW

**WASHINGTON**  
U Pasco 99201 ... 824 W. Lewis St.  
A I M U Seattle 98188 ... 172 Andover Park, E.  
A I U Spokane 99220 ... E. 1805 Trent Ave.

**WEST VIRGINIA**  
A I Charleston 25328 ... 308 MacCorkle Ave., SE  
I U Fairmont 25755 ... 310 Jacobs Bldg.  
U Huntington 25701 ... 1401 Sixth Ave.  
A Wheeling 26002 ... 40 14th St.

**WISCONSIN**  
A I U Appleton 54911 ... 3003 W. College Ave.  
U Madison 53703 ... 340 W. Washington Ave.  
C Milwaukee 53226 ... Mayfair Plaza, 2421 N. Mayfair Rd.  
A I U Milwaukee 53202 ... 515 E. Michigan St.

**CANADA**  
Canadian General Electric Company, Ltd.  
Toronto

## GENERAL ELECTRIC SERVICE SHOPS

WHEN YOU NEED SERVICE ... These GE service shops will repair, recondition, and rebuild your electric apparatus. The facilities are available day and night, seven days a week, for work in the shops or on your premises. Latest factory methods and genuine GE renewal parts are used to maintain peak performance of your equipment. For full information about these services, contact your nearest service shop or sales office.

**ALABAMA**  
Birmingham 35211 ... 1500 Mims Ave., S. W.

**ARIZONA**  
Phoenix 85019 ... 3840 W. Clarendon Ave.  
(Instrumentation Service)

**CALIFORNIA**  
Inglewood 90301 ... Los Angeles Instrumentation Service  
Los Angeles 90001 ... 6900 Stanford Ave.  
Oakland 94608 ... 3400 Wood St.  
Sacramento 95814 ... 98 North 17th St.  
San Francisco 94103 ... 1069 Harrison St.

**COLORADO**  
Denver 80205 ... 3353 Larimer St.

**CONNECTICUT**  
(Soulington) Plainville 06479 ... 270 Alwater St.

**FLORIDA**  
Jacksonville 32203 ... 2020 W. Beaver St.  
(Miami) Hialeah 33010 ... 1942 E. 28th St.  
Tampa 33601 ... P. O. Box 1245

**GEORGIA**  
(Atlanta) Chamblee 30005 ... 5035 Peachtree Industrial Blvd.  
... 5035 Peachtree Industrial Blvd.

**ILLINOIS**  
Chicago 60638 ... 6945 S. Nottingham Ave.

**INDIANA**  
Fl. Wayne 48803 ... 1731 Edsall Ave.  
Indianapolis 46232 ... 1740 W. Vermont St.

**IOWA**  
(Davenport) Bettendorf 52722 ... 1025 State St.

**KENTUCKY**  
Louisville 40209 ... 3900 Crittenden Dr.

**LOUISIANA**  
New Orleans 70114 ... 1315 De Armas St.

**MARYLAND**  
Baltimore 21220 ... 920 E. Fort Ave.

**MASSACHUSETTS**  
(Boston) Medford 02155 ... 3860 Myatic Valley Parkway

**MICHIGAN**  
Detroit 48202 ... 5850 Third St.  
Flint 48505 ... 1808 E. Carpenter Rd.

**MINNESOTA**  
Minneapolis 55430 ... 2025-49th Ave., N.  
W. Duluth 55807 ... P. O. Box 7198

**MISSOURI**  
Kansas City 64120 ... 3525 Gardner Ave.  
St. Louis 63110 ... 3115 East Road

**NEW YORK**  
Albany 12285 ... 1091 Central Ave.  
Buffalo 14211 ... 218 Urban St.  
Clifton, N. J. 07012 ... New York Instrumentation Service  
North Bergen, N. J. 07047 ... 6001 Tonnelle Ave.  
Schenectady 12305 ... (Instrumentation Service) 1 River Road  
Syracuse 13208 ... 3015 E. Hlwaitha Blvd.

**NORTH CAROLINA**  
Charlotte 28208 ... 2328 Thrill Road

**OHIO**  
Cincinnati 45202 ... 444 W. Third St.  
Cleveland 44125 ... 4477 East 49th St.  
Columbus 43229 ... 8860 Huntley Rd.  
Toledo 43605 ... 405 Dearborn Ave.  
Youngstown 44507 ... 272 E. Indiana Ave.

**OREGON**  
Portland 97210 ... 2727 N. W. 29th Ave.

**PENNSYLVANIA**  
Allentown 18102 ... 688 E. Highland St.  
Johnstown 15805 ... 841 Oak St.  
Philadelphia 19124 ... 1040 E. Erie Ave.  
(Pittsburgh) West Mifflin, Pa. 15122 ... 4930 Butlermilk Hollow Rd., R. D. #1  
York 17403 ... 54 N. Harrison St.

**TENNESSEE**  
Knoxville 37914 ... 2621 Gov. John Sevier Hwy.  
Memphis 38107 ... 708 No. Main St.

**TEXAS**  
Corpus Christi 78401 ... 115 Waco St.  
Dallas 75235 ... 3202 Manor Way  
Houston 77020 ... 5534 Harvey Wilson Dr.  
Midland 79701 ... 704 S. Johnston St.

**UTAH**  
Salt Lake City 84110 ... 301 S. 7th West St.

**VIRGINIA**  
Richmond 23224 ... 1403 Ingram Ave.  
Roanoke 24013 ... 1004 River Ave., S. E.

**WASHINGTON**  
Seattle 98134 ... 3422 First Ave., S.  
Spokane 99211 ... E. 4223 Mission St.

**WEST VIRGINIA**  
Charleston 25328 ... 308 MacCorkle Ave., S. E.

**WISCONSIN**  
Appleton 54910 ... P. O. Box 83  
Milwaukee 53207 ... 238 W. Oklahoma Ave.