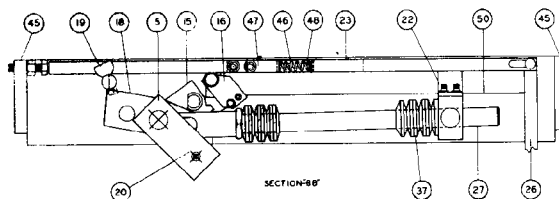
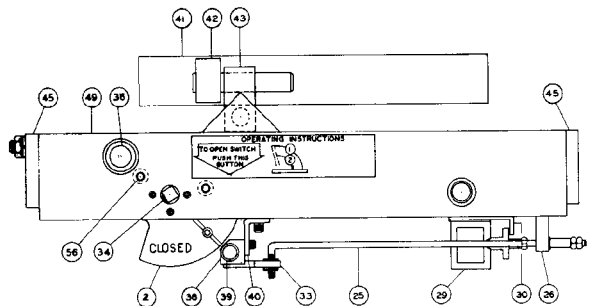


SECTION 'AA'

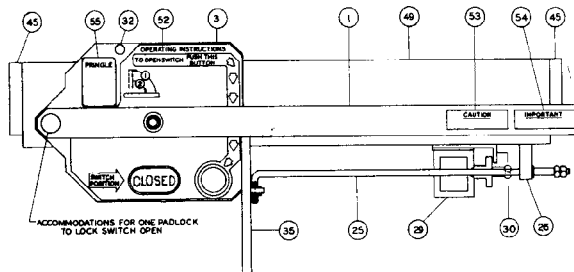


LOCATED BEHIND THIS PART OF THE OPERATING LEVER SEE DETAIL 'C'

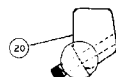
SECTION 'BB'



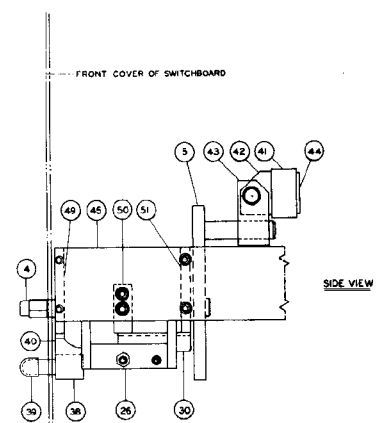
FRONT VIEWS



PART	DESCRIPTION	PART	DESCRIPTION
1	OPERATING HANDLE	41	YOKE
2	INDICATOR PLATE	42	YOKE BLOCK
3	TRIM PLATE	43	UNIVERSAL BLOCK
4	OPERATING SHAFT	44	YOKE PLATE
5	OPERATING LEVER	45	HORIZONTAL SUPPORTS
6	SPRING CAM (CLOSING)	46	SPRING (LINK)
7	CLOSING CAM STOP	47	SPRING BLOCK
8	SPRING CLEVIS	48	GUIDE PIN-LINK SPRING
9	SPACER	49	FRONT BEARING SUPPORT
10	WASHERS	50	MIDDLE BEARING SUPPORT
11	TRUNION BLOCK	51	REAR BEARING SUPPORT
12	PRESSURE NUT	52	LABEL (TRIM PLATE)
13	PAWL	53	LABEL (CAUTION-HANDLE)
14	CLOSING CATCH	54	LABEL (IMPORTANT-HANDLE)
15	SPRING LOADER	55	RATING PLATE (TRIM PLATE)
16	HANDLE CATCH SUPPORT	56	HANDLE STOP (2)
17	HANDLE CATCH		
18	SPRING CAM (OPENING)		
19	OPENING SPRING CAM LATCH PIN		
20	OPENING SPRING CAM ARM (SEE DETAIL C)		
21	PAWL TRIP STOP		
22	HANDLE CATCH ACTUATOR		
23	OPENING TRIP LINK		
24	HANDLE CATCH LINK		
25	MANUAL TRIP LINK		
26	TRIP LEVER		
27	OPENING SPRING SHAFT		
28	CLOSING SPRING SHAFT		
29	SOLENOID		
30	SOLENOID SUPPORT		
31	TRIP LEVER PIVOT PIN		
32	HANDLE STOP PIN (USED AS VISUAL GUIDE)		
33	PUSH BUTTON ARM		
34	HANDLE REJECTION PIN		
35	FUSE DOOR INTERLOCK ROD & COVER		
36	OPENING CATCH PIN BEARING		
37	DISC SPRINGS		
38	PUSHBUTTON SUPPORT		
39	PUSHBUTTON & COVER		
40	PUSHBUTTON BEARING SUPPORT		



DETAIL 'C'  
LOCATED ON A SPRING LOADED SHAFT IN THE TIE BAR OF THE OPERATING LEVER

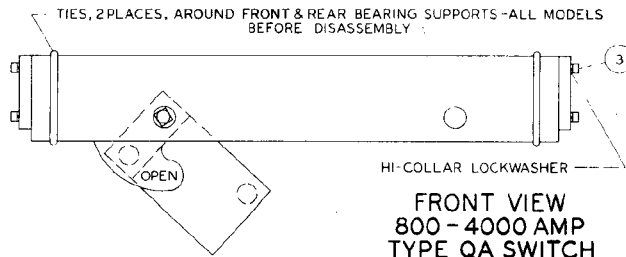


SIDE VIEW

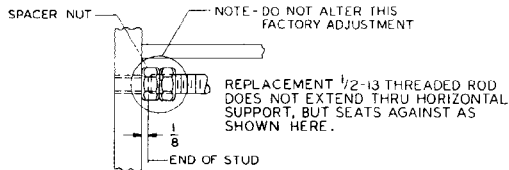
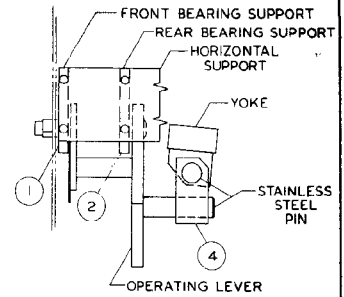
NOTES:  
LUBRICANT  
PERIODICALLY ALL PIVOT POINTS SHOULD BE LUBRICATED WITH A MINIMUM AMOUNT OF LIGHT OIL  
THIS DWG. MAY ALSO BE USED TO IDENTIFY 3000A & 4000A MECHANISMS  
3000A & 4000A HAVE DOUBLE SPRING ASSEMBLY. THIS SECOND SPRING IS SMALLER & IS MOUNTED ON THE LEFT SIDE OF THE OPERATING SHAFT FACING THE SWITCH  
THIS MECHANISM MANUFACTURED FROM  
FOR SWITCHES SEE C-51900

JULY 1972-70  
REV. NR1 5-15-75  
REV. NR2 2-27-76  
REV. NR3 3-14-77

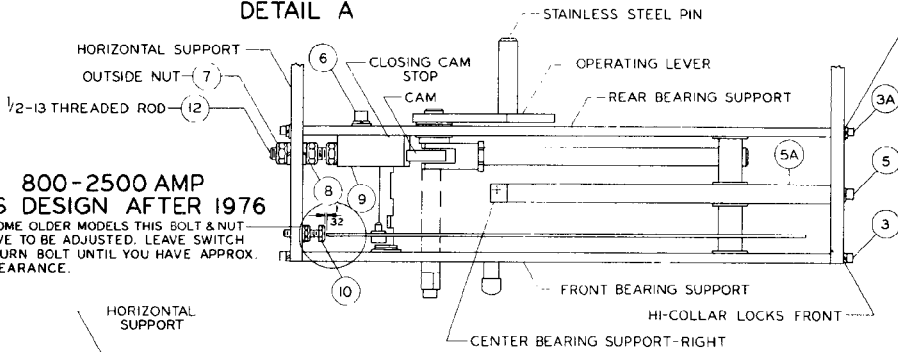
TYPE QA-CBC  
DEAD FRONT MECHANISM  
FOR  
800A-4000A  
PRINGLE ELECTRICAL MFG. CO.  
FORT WASHINGTON, PA.  
ORDER \_\_\_\_\_ DATE 4-10-77  
SCALE \_\_\_\_\_ CHECKED BY \_\_\_\_\_  
D-62340



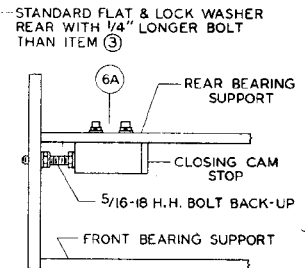
FRONT VIEW  
800-4000 AMP  
TYPE QA SWITCH  
SEE INSTRUCTIONS - SHEET H SECTION IV



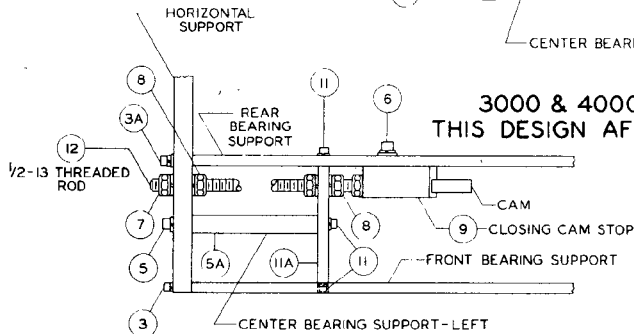
DETAIL A



800-2500 AMP  
THIS DESIGN AFTER 1976  
DO TO SOME OLDER MODELS THIS BOLT & NUT MAY HAVE TO BE ADJUSTED. LEAVE SWITCH OPEN, TURN BOLT UNTIL YOU HAVE APPROX. 1/32" CLEARANCE.



TYPICAL STOP  
THIS DESIGN  
PRIOR TO 1976

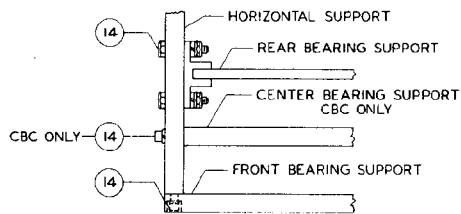


3000 & 4000 AMP  
THIS DESIGN AFTER 1976

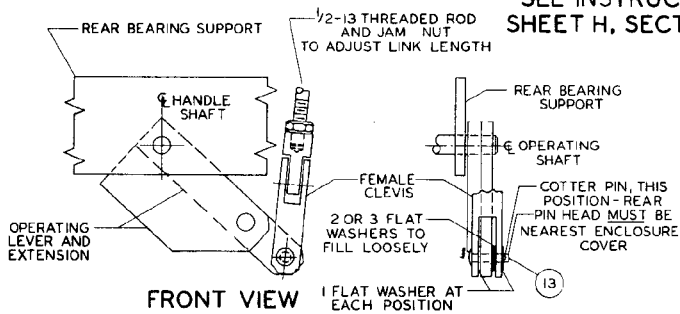
NOTE:  
FOR COMPLETE PARTS  
REFERENCE, REFER TO  
PRINGLE DWG. D-62340

PLAN VIEW  
800-4000 AMP  
TYPE CBC SWITCH  
SEE INSTRUCTIONS - SHEET H, SECTION V

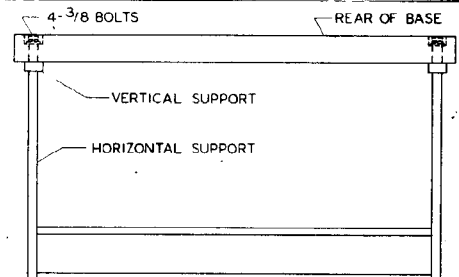
PLAN VIEW  
TYPICAL RIGHT & LEFT - LEFT SHOWN



5000 & 6000 AMP  
TYPICAL QA & CBC  
SEE INSTRUCTIONS  
SHEET H, SECTION VI



FRONT VIEW



DETAIL B - PLAN VIEW  
SEE INSTRUCTIONS - SHEET H, SECTION VII

TYPE QA & CBC  
FIELD INSTALLATION INSTRUCTIONS  
FOR  
DEAD FRONT MECHANISMS  
800A.-6000A.

PRINGLE ELECTRICAL MFG. CO.  
FORT WASHINGTON, PA. U.S.A.

TOLERANCES UNLESS OTHERWISE NOTED	ORDER SCALE DATE 1-25-81
FRACTIONS	DRAWN BY PA CHECKED BY P.B.
DECIMALS	C-67340
DEGREES	

REV D-1 CHANGE