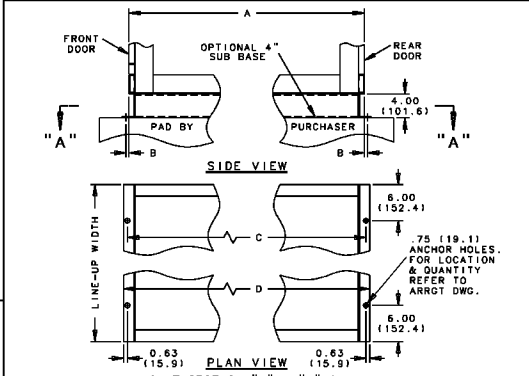
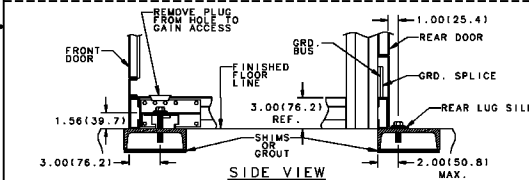


REVISIONS			
REV	DESCRIPTION	DATE	APPROVED
1	DCN	DROSTE 8/20/98	
2	DCN 99K022	REL 3/18/99	CU



A	B		C		D	
	STANDARD	OPT. GM	STANDARD	OPT. GM	STANDARD	OPT. GM
DEPTH OF INDOOR SWITCHGEAR	BOLTED	WELDED	BOLTED	WELDED	BOLTED	WELDED
60.00 (1524.0)			62.50 (1587.5)	60.50 (1536.7)	63.75 (1619.3)	61.75 (1568.5)
67.00 (1701.8)	1.25 (31.8)	0.25 (6.4)	69.50 (1765.3)	67.50 (1714.5)	70.75 (1797.1)	68.75 (1746.3)
74.00 (1879.6)			76.50 (1943.1)	74.50 (1892.3)	77.75 (1974.9)	75.75 (1924.1)
81.00 (2057.4)			83.50 (2120.9)	81.50 (2070.1)	84.75 (2152.7)	82.75 (2101.9)

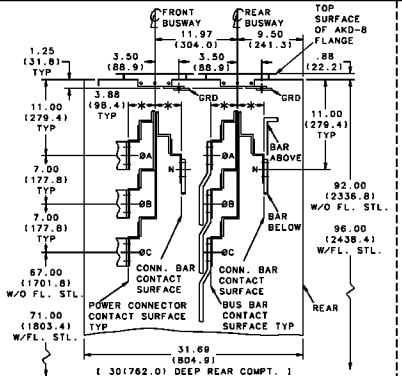
OPTIONAL METHOD OF ANCHORING  
(ANCHOR BOLTS BY PURCHASER) - (SEE NOTE 5)



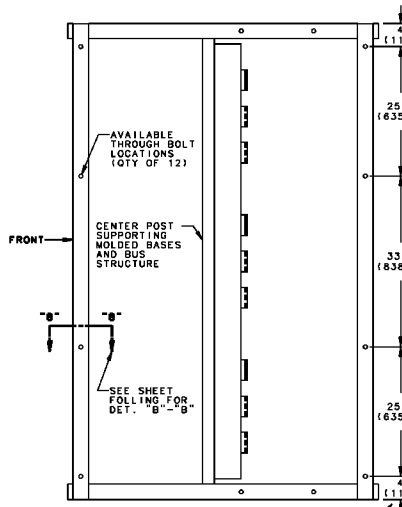
METHOD OF ANCHORING  
(ANCHOR BOLTS, FLOOR CHANNELS & SHIMS BY PURCHASER) - (SEE NOTES 4 & 5)

- NOTES:**
- REFER TO THE SUMMARY AND FRONT VIEW ARRG'T. DRAWING FOR ADDITIONAL INFORMATION AND MAT'L. BEING FURNISHED. REFER TO EQUIP. INSTALLATION & MAINTENANCE INSTRUCTION MANUAL DEH-194, FOR ADDITIONAL INSTRUCTIONS DURING INSTALLATION.
  - ALL SHIPPING SPLIT HARDWARE TO BE DISASSEMBLED BEFORE ADJACENT SHIPPING PACKAGES ARE SET IN PLACE. REASSEMBLE TO SECURE SHIPPING SPLIT.
  - REMOVE TOP WIRE TROUGH COVER ON UNITS AT EITHER SIDE OF SHIP SPLIT TO CONNECT ALL SHIP SPLIT INTERCONNECT WIRING. DO NOT OPERATE BREAKER HOIST W/TOP WIRE TROUGH COVERS REMOVED.
  - "C" CHANNELS ARE RECOMMENDED, BUT NOT REQ'D., FOR ANCHORING AS LONG AS A LEVEL FLOOR SURFACE IS PROVIDED. FOR SEISMIC ANCHORING, "C" CHANNELS ARE REQ'D. EMBEDDED FLOOR CHANNELS SHOULD BE SET LEVEL WITH EACH OTHER AND SHOULD BE LEVEL OVER THEIR ENTIRE LENGTH. THE FINISHED FLOOR SHOULD HAVE A SLIGHT PITCH AWAY FROM THE MOUNTING CHANNELS AND IN NO CASE SHOULD THE FINISHED FLOOR BE HIGHER THAN THE CHANNELS. FLOOR CHANNELS MUST BE DRILLED AND TAPPED. (WELD NUTS MAY BE WELDED INSIDE OF CHANNEL).
  - WHERE REQUIRED BY THE JOB SPECIFICATIONS, THE EQUIPMENT MAY BE FILLET WELDED TO THE FLOOR CHANNELS THROUGH THE REAR ANCHOR HOLES AND ALONG THE ENTIRE FRONT EDGE OF THE LINE-UP WITH A 1/8" BEAD, 1" LONG, APPROXIMATELY EVERY 8".
  - ALL DIMENSIONS SHOWN IN PARENTHESIS ARE METRIC.

FOR INTERPRETATION OF DRAWINGS SEE 0262A3025  
GE (USA) CONFIDENTIAL AND PROPRIETARY  
This GE document contains confidential and proprietary information of GE Electrical Distribution & Control (ED&C). It is loaned on condition that it and the information therein shall not be used by recipient nor be disclosed to others except as expressly approved by ED&C. Any document containing such information shall be returned on request.

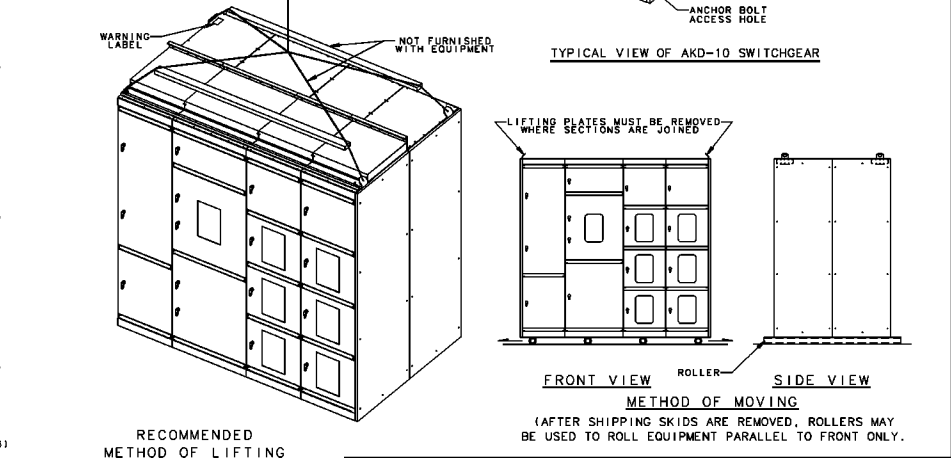
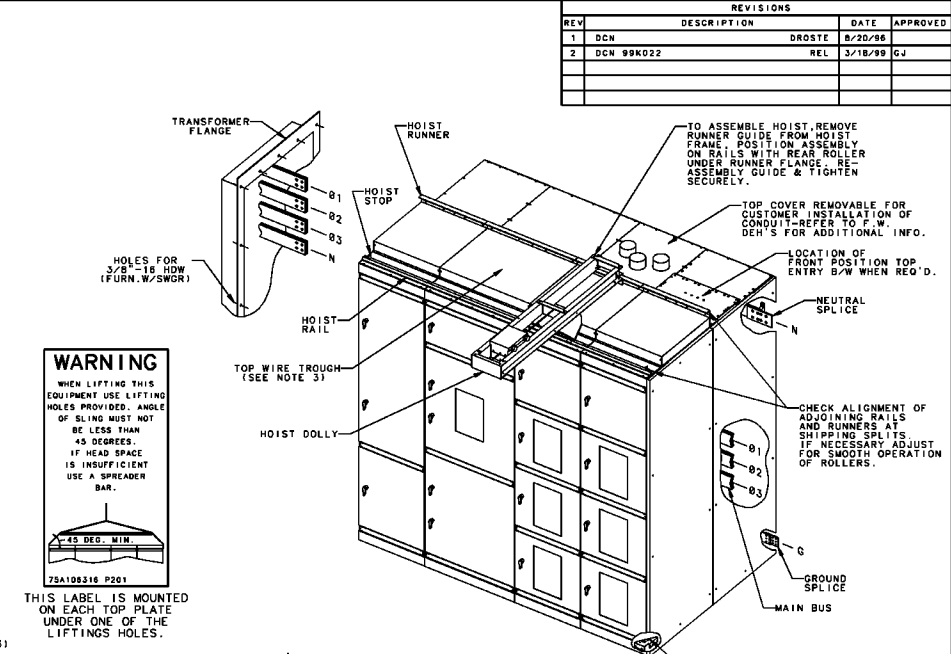


SPECTRA B/W CONNECTIONS  
REF. DWG. # 0317A8592 SH'S. 1 THRU 6 FOR ADDITIONAL INFO.



STEEL FRAME CONNECTION  
(AT SHIPPING SPLIT) - (SEE NOTE 2)

USE (1) HOLE AT THE TOP & (1) HOLE AT THE BOTTOM AS NEAR AS POSSIBLE TO THE MAIN BUS TO INSURE PROPER ALIGNMENT OF SHIPPING SPLIT MAIN BUS.



UNLESS OTHERWISE SPECIFIED		SIGNATURES	DATE	GE ED&C	
DIMENSIONS ARE IN INCHES		DRAWN MARLETTE	2/22/91	BURLINGTON, IA	
TOLERANCES ARE:		CHECKED		TITLE	
2 PL. DECIMALS 0.000		ENGRD		INSTALLATION DRW -INDOOR	
3 PL. DECIMALS 0.000		ISSUED		FIRST MADE FOR AKD-8	
ANGLES 0.1°		BY		SIZE D	
FRACTIONS 1/8		DRAWING FILE	176C7425	DWG NO 0176D7425	
		REFERENCE FILE		PL. ISSUED	

0176D7425

REVISIONS			
REV	DESCRIPTION	DATE	APPROVED
1	DCN 99K022	REL 3/18/99	

**STORAGE PRECAUTIONS**

BEFORE STORING UNPACK SUFFICIENTLY TO CHECK FOR CONCEALED DAMAGE. IF DAMAGED NOTIFY SHIPPER IMMEDIATELY. IF FREE OF DAMAGE, RESTORE PACKING UNTIL READY FOR INSTALLATION.

STORE INDOORS IN A CLEAN, DRY AREA. PREFERABLY CLOSE TO THE INSTALLATION POINT.

PROTECT THE EQUIPMENT FROM MECHANICAL DAMAGE AND ANY CONTACT WITH, OR EXPOSURE TO, CORROSIVE FUMES, LIQUIDS, SALTS, OR CONCRETE.

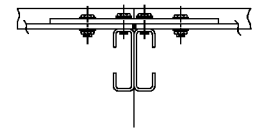
IF STORED IN A COOL OR DAMP AREA, HEAT SHOULD BE PROVIDED TO KEEP THE EQUIPMENT DRY. WHEN HEATERS ARE SUPPLIED, THIS MAY BE ACCOMPLISHED BY MAKING TEMPORARY POWER CONNECTION TO THE HEATERS INSTALLED IN THE EQUIPMENT. ON ALL OTHER EQUIPMENT, TWO STANDARD 120 VOLT LAMPS RATED AT 100 WATTS EACH, CAN BE USED INSIDE EACH VERTICAL SECTION.

FAILURE TO STORE AND PROTECT THE EQUIPMENT PROPERLY CAN CAUSE SERIOUS DAMAGE AND WILL VOID WARRANTY.

READ ENCLOSED INSTALLATION INSTRUCTIONS BEFORE PROCEEDING.

75A106169 P101

STORAGE PRECAUTIONS LABEL



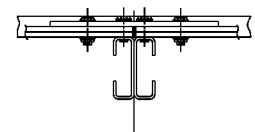
PLAN VIEW  
800A - GROUND BUS CONN.  
(SEE NOTE 1)

TORQUE VALUES FOR LOW VOLTAGE EQUIPMENT HARDWARE (COPPER OR ALUMINIUM)	
BOLT SIZE	FOOTPOUNDS W/MACHINE NUT, LOCKWASHER, FLATWASHER &/OR BELLVILLE WASHER
1/4-20	7-9
3/8-16	25-30
1/2-13	35-40

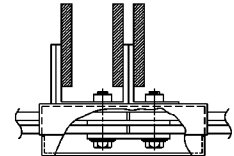
TORQUE VALUES



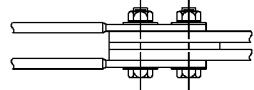
SECTION "B" - "B"



PLAN VIEW  
1600A - GROUND BUS CONN.  
(SEE NOTE 1)

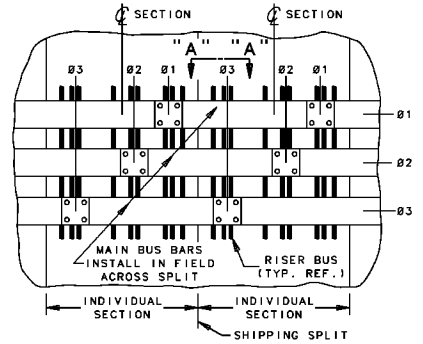


SECTION "A" - "A"  
(3200A/CU MAIN BUS SHOWN)

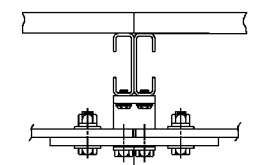


PLAN VIEW  
TRANSFORMER CONNECTION

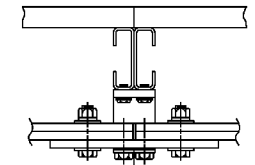
(MAY BE 1, 2 OR 3 BARS/PHASE - 2 BARS SHOWN)



REAR VIEW  
MAIN BUS CONNECTION  
(3200A/CU BOLTED SHOWN) - (SEE NOTE 2)



PLAN VIEW  
1600A NEUTRAL BUS CONN.  
(WHEN USED) - (SEE NOTE 1)



PLAN VIEW  
3200A NEUTRAL BUS CONN.  
(WHEN USED) - (SEE NOTE 1)

NOTE:

- GROUND BUS SPLICE AND HARDWARE WILL NORMALLY BE SHIPPED ASSEMBLED TO EITHER SIDE OF ADJACENT SHIPPING PACKAGES. NEUTRAL SPLICE, HARDWARE AND INSULATORS (WHEN FURNISHED) WILL NORMALLY BE SHIPPED ASSEMBLED TO EITHER SIDE OF ADJACENT SHIPPING PACKAGES.
- MAIN BUS BARS ACROSS SHIPPING SPLITS ARE PACKAGED AND SHIPPED DISASSEMBLED. EACH BAR IS MARKED WITH PHASE AND SECTION DESIGNATION. HARDWARE WILL NORMALLY BE SHIPPED ASSEMBLED ON POWER CONNECTORS IN SWITCHGEAR. FOR ALUMINIUM BUS REFER TO GEH-5687, SECTION IV.
- ALL DIMENSIONS SHOWN IN PARENTHESIS ARE METRIC.

FOR INTERPRETATION OF DRAWINGS SEE 0262A3025

**GE (USA) CONFIDENTIAL AND PROPRIETARY**

This GE document contains confidential and proprietary information of GE Electrical Distribution & Control (ED&C). It is loaned on condition that it and the information therein shall not be used by recipient nor be disclosed to others except as expressly approved by ED&C. Any document containing such information shall be returned on request.

UNLESS OTHERWISE SPECIFIED DIMENSIONS ARE IN INCHES TOLERANCES ON: 2 PL. DECIMALS 0.000 3 PL. DECIMALS 0.000 ANGLES 0.1 FRACTIONS 1/16	SIGNATURES DRAWN MARLETTE CHECKED ENGRD ISSUED BY: D.E. DRAWING FILE 0176D7425 REFERENCE FILE	DATE 2/22/91        FIRST MADE FOR AKD-8 SIZE D GENERATED PL. ISSUED	GE ED&C BURLINGTON, IA TITLE INSTALLATION DRW -INDOOR DWG NO 0176D7425 CONT. ON NEXT SHEET FINAL 2
--	--	--	---